

⑤ 440 200

336967

*Acad-1*

①

THE COMMUNIST CHINESE NUCLEAR THREAT:  
WARHEADS AND DELIVERY VEHICLES (U)

DONALD B. KEESING

ASTIA  
RECEIVED  
MAY 9 1963  
TISIA

FILE NO. 336967  
DDC FILE COPY

International Studies Division

Study Memorandum 17

336967

Institute for Defense Analyses



Copy 7/ of 80 copies

IDA HQ. 63-1091

This document contains information affecting the national defense of the United States within the meaning of the Espionage Laws, Title 18, U. S. Code, Sections 793 and 794. The transmission or the revelation of its contents in any manner to an unauthorized person is prohibited by law.

EXCLUDED FROM AUTOMATIC REGRADING; DOD DIR 5200.10 DOES NOT APPLY.

The views expressed herein are not necessarily those of IDA or of the Department of Defense.

Not to be quoted at length, abstracted, or reproduced without the specific permission of the Institute for Defense Analyses.

211

(5) 440 200

~~SECRET~~  
~~RESTRICTED DATA~~

(7-7) 14

(14) Study Memorandum No. 17;  
16) THE COMMUNIST CHINESE NUCLEAR THREAT:  
WARHEADS AND DELIVERY VEHICLES (U)

(10) by DONALD B. KEESING

(11) September 15 1962

Prepared in support of a study submitted to the  
Department of Defense under Contract No. SD-50,  
Task Order T-23, effective 1 July 1961

(17)  
12) 92 p.  
13) N/A  
14) N/A  
15) N/A  
16) S R D  
2 1 4

INTERNATIONAL STUDIES DIVISION  
INSTITUTE FOR DEFENSE ANALYSES  
1666 Connecticut Avenue, N. W.  
Washington 9, D. C.

Issued April 1963

~~SECRET~~  
~~RESTRICTED DATA~~

19

~~SECRET  
RESTRICTED DATA~~

FOREWORD

The author, Donald B. Keesing, is an economist and Far Eastern specialist. Before joining the Institute for Defense Analyses he was with the Systems Analysis Office, Air Force Cambridge Research Laboratories, where he co-authored a number of analytic studies on theater air power, space research needs, command and control, and other subjects. He has also taught economics at Harvard University, where he served on the staff of the Harvard Defense Studies Program and later as an associate of the Harvard Economic Research Project.

This paper was written in support of Study PACIFICA, an analysis of the emergence of Communist China as a nuclear power. Study PACIFICA was prepared by the International Studies Division of IDA for the Department of Defense, under Contract No. SD-50, Task Order T-23, effective 1 July 1961. Brigadier General Sidney F. Giffin, USAF (Ret.) was Study Leader.

JAMES E. KING, JR.  
Director  
International Studies Division

iii

~~SECRET  
RESTRICTED DATA~~

~~SECRET~~  
~~RESTRICTED DATA~~

CONTENTS

	<u>Page</u>
SUMMARY . . . . .	ix
I. INTRODUCTION . . . . .	1
PURPOSE AND SCOPE . . . . .	1
ASSUMPTIONS . . . . .	1
On Soviet Support . . . . .	1
On the Chinese Economy and Food Situation . . . . .	2
On the Chinese Choice of Policies for Nuclear Development. . . . .	4
INTELLIGENCE LIMITATIONS. . . . .	5
SECURITY LIMITATIONS AND ACKNOWLEDGEMENTS . . . . .	6
II. AN ESTIMATE OF CHINESE NUCLEAR REQUIREMENTS . . . . .	7
GENERAL CONSIDERATIONS. . . . .	7
REGIONAL REQUIREMENTS . . . . .	9
Range . . . . .	9
Numbers . . . . .	12
Survivability . . . . .	13
Targeting . . . . .	13
CEP, Yield, and Reliability . . . . .	14
Manned Vehicles vs. Missiles. . . . .	15

v  
~~SECRET~~  
~~RESTRICTED DATA~~

~~SECRET~~  
~~RESTRICTED DATA~~

INTERCONTINENTAL REQUIREMENTS . . . . .	16
OTHER REQUIREMENTS. . . . .	18
SUMMARY OF EARLY CHINESE REQUIREMENTS . . . . .	19
III. NUCLEAR WARHEADS. . . . .	21
GENERAL EVIDENCE. . . . .	21
CHOICES ON FISSIONABLE MATERIALS PRODUCTION . . . . .	27
General . . . . .	27
Military Considerations . . . . .	28
Production Considerations . . . . .	30
FACTORS INFLUENCING THE TIMING OF THE FIRST TEST. POSSIBILITIES OF SERIES TESTING . . . . .	34
WEAPONS DESIGN TECHNOLOGY . . . . .	39
First Deliverable Device. . . . .	39
First Thermonuclear Weapons . . . . .	41
Economizing Nuclear Materials . . . . .	45
STOCKPILE PROJECTIONS . . . . .	47
Plutonium Production. . . . .	47
Oralloy Production. . . . .	54
SUMMARY . . . . .	63
IV. DELIVERY SYSTEMS. . . . .	64
PRESENT PRODUCTION EXPERIENCE AND R&D CAPABILITIES. . . . .	64
MANNED BOMBERS. . . . .	66
SHORT- AND MEDIUM-RANGE BALLISTIC MISSILES. . . . .	72

~~SECRET~~  
~~RESTRICTED DATA~~

~~SECRET~~  
~~RESTRICTED DATA~~

SUBMARINE AND SUBMARINE-MISSILE COMBINATIONS . . . . .	84
ICBM: COMPETING POSSIBILITIES . . . . .	86
INTERCONTINENTAL CRUISE MISSILE. . . . .	90
SUMMARY. . . . .	92

TABLES

RANGE REQUIREMENTS . . . . .	11
PLUTONIUM OUTPUT AND WARHEAD STOCKPILE FROM A SERIES OF REACTORS OF INITIAL 200-MW DESIGN . . . . .	50
PLUTONIUM OUTPUT AND WARHEAD STOCKPILE FROM A SERIES OF REACTORS OF INITIAL 150-MW DESIGN . . . . .	53
HYPOTHETICAL ORALLOY PRODUCTION SCHEDULE . . . . .	58
STOCKPILE (NOMINAL-YIELD FISSION WARHEAD EQUIVALENT) . . . . .	60
TOTAL STOCKPILE. . . . .	61
IL-28 (BEAGLE) . . . . .	69
TU-16 (BADGER) . . . . .	71
AIRCRAFT CAPABLE OF DELIVERING NUCLEAR WEAPONS . . . . .	72
SOVIET BALLISTIC MISSILES. . . . .	78
OPERATIONAL MREMs. . . . .	84

~~SECRET~~  
~~RESTRICTED DATA~~

~~SECRET~~  
~~RESTRICTED DATA~~

336 967

SUMMARY

↓  
An attempt is made to project into the future Communist China's nuclear capabilities in terms of warheads and delivery vehicles, and to analyze Chinese nuclear requirements. It is assumed that the Communist Chinese will accord high priority to advanced weapons programs but will receive no significant Soviet help. Intelligence is accepted to the effect that the Chinese are already engaged, or are about to engage, in production of plutonium by means of a nuclear reactor and that they have also had a chance to observe tests and assembly of Soviet short- and medium-range ballistic missiles on a test range in China. Nuclear stockpile projections are undertaken based in part on the assumption that effective operation of a Chinese metallic uranium facility began as early as January 1961.

If Chinese nuclear programs have been delayed for one or several years by severe technical or economic setbacks, projections of stockpiles and technical characteristics of weapons should, allowing for this delay, still be generally valid. For US policy purposes, it was necessary to give the Chinese the benefit of the doubt, to enable consideration of the more serious threats that China might pose without Soviet assistance.

ix  
~~SECRET~~  
~~RESTRICTED DATA~~



~~SECRET  
RESTRICTED DATA~~

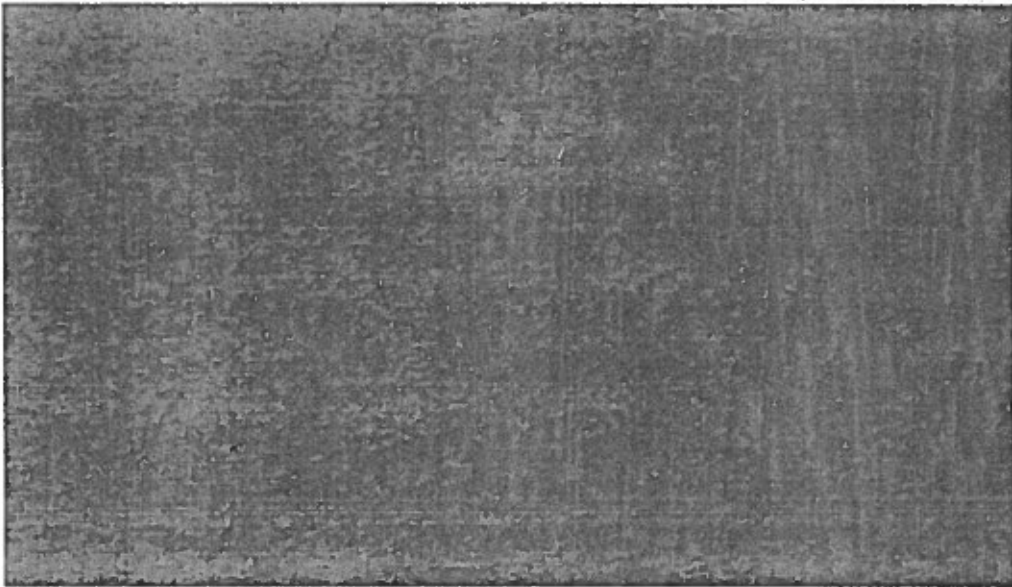
An accompanying estimate of nuclear requirements (from the Chinese point of view) underscores the immensity of the technical problem for the Chinese. For local and regional purposes Communist China, even when it acquires missiles, will still require a manned-vehicle capability to offset targeting inadequacies and to compensate for the inaccuracy inherent in the early missiles. The problem of attacking ships at sea will be particularly great. Even unhardened, fixed, land targets such as airfields will call for the use of thermonuclear rather than fission-missile warheads to offset moderate circular probable errors [CPEs]. The ballistic missile requirement will be for ranges of at least 700 nautical miles [NM], and preferably 1,100 nautical miles, which will permit flexible deployment against all the important bases and capital cities around the Chinese periphery. Of particular importance to the Chinese will be concealment of missiles, to prevent targeting by the United States.

The Communist Chinese must jump to operational missiles with ranges of as much as 6,000 nautical miles to threaten credibly the United States itself. Intercontinental forces must be made survivable in the face of advanced future weapons and reconnaissance systems. Emplacement by the Chinese of any missiles with ranges of 2,000 nautical miles or more will automatically threaten the Soviet Union.

~~SECRET  
RESTRICTED DATA~~

~~SECRET~~  
~~RESTRICTED DATA~~

The projections suggest the following timetable for a Communist Chinese nuclear weapons program that enjoys high priority and that already has a favorable start.



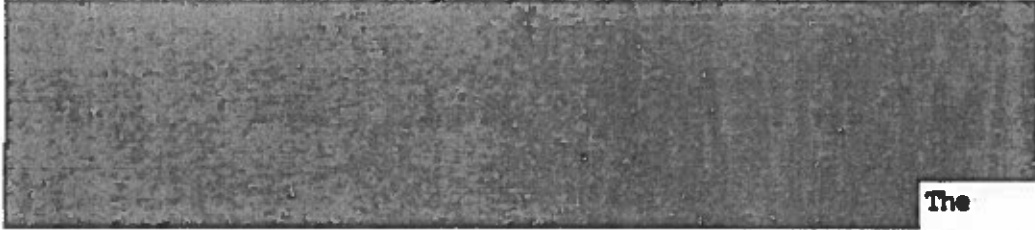
Severe technical or economic difficulties, or a deliberate "stretch-out," would result in systematic delays, whereas little acceleration of such a schedule appears possible without direct Soviet assistance. After all, stockpile acquisition depends on the accumulation of production facilities for nuclear weapons, and advances in warhead technology depend on repeated nuclear tests.

Delivery vehicle development is likely to prove even more difficult and expensive for China than warhead development.

x1

~~SECRET~~  
~~RESTRICTED DATA~~

~~SECRET  
RESTRICTED DATA~~



The

Chinese are likely to concentrate on ballistic missiles, in which case, starting some time between 1966 and 1968, they could probably have the capability to deploy a few nuclear-tipped medium range (700 to 1,100 NM) ballistic missiles of their own manufacture. The threat would reach the vicinity of 10<sup>3</sup> fairly accurate MRBMs, supplemented by bombers, in 1970 at the earliest. ICBMs cannot be deployed by China until some time in the 1970s. Apart from minor clandestine threats, seaborne strategic systems are unpromising and unlikely. A crude intercontinental aerodynamic threat is also unlikely, unless an ICBM program encounters unforeseen difficulties.

~~SECRET  
RESTRICTED DATA~~

~~SECRET~~  
~~RESTRICTED DATA~~

## I. INTRODUCTION

### PURPOSE AND SCOPE

This discussion of the Communist Chinese nuclear threat is intended to supplement and complement existing national intelligence estimates.

The intention is to reflect, in addition to the basic intelligence indications, underlying considerations discussed only to a limited extent in the estimates. These factors include Chinese requirements for nuclear weapons systems, numerical projections of the Chinese threat based on plausible assumptions, and key choices open to Chinese decision-makers. The purpose is (1) to summarize the evidence and reconstruct some of the basic considerations so that the reader can better judge for himself; and (2) to suggest a relatively specific and quantified picture of the threat.

### ASSUMPTIONS

#### On Soviet Support

Assumptions regarding the future level of Soviet support and assistance to Communist China are extremely important in defining

~~SECRET~~  
~~RESTRICTED DATA~~

~~SECRET  
RESTRICTED DATA~~

the Chinese threat. Except where otherwise stated the following assumptions are made:

- a. No new Soviet commitments to render large-scale technical and economic assistance will be forthcoming. Trade with the Soviet Union in commodities important for Chinese industrialization may continue.
- b. No additional weapon systems adaptable for nuclear delivery will be supplied outright to the Communist Chinese.
- c. Soviet assistance will not be renewed in the nuclear field, and will not be extended in the missile field.

On the Chinese Economy and Food Situation.

Withdrawal of Soviet technical assistance in 1960 and subsequent diminished deliveries of Soviet-built equipment have caused major setbacks to Chinese industrial and technical progress. The agricultural (or food and population) situation, moreover, threatens to be chronically so precarious as severely to retard Chinese industrialization and military-nuclear development over the next decade or longer. Chinese economic troubles pose serious difficulties for estimators, because it is extremely hard to discern how much any particular high-priority effort, such as the nuclear program, has been set back. For US policy purposes, however, it is desirable to explore whether the US could handle the

~~SECRET  
RESTRICTED DATA~~

~~SECRET  
RESTRICTED DATA~~

most severe threats that China could pose without outside support. This paper therefore assumes that the nuclear weapons program has not been seriously set back by the general industrial breakdown and food shortages. Instead, projections are based essentially on a judgment of Chinese technical capabilities, including additions to these capabilities likely in the event that the industrial part of the economy resumes its expansion by the mid-60s.

Accordingly economic assumptions chosen for the present paper, except where noted, include the following:

- a. Chinese agricultural crises will not cause the ruling regime to set aside its nuclear ambitions, nor lead to a counterrevolution.
- b. The regime, although not free from agricultural troubles for many years, will bring the situation substantially under control. By the mid-1960s China will begin to meet its agricultural needs.
- c. As a result industrial recovery will become effective by 1964-65 and thereafter the industrial sector of the economy will grow by significantly more than 5% but usually not more than 10% a year.

More severe economic difficulties would probably render infeasible a number of the potential achievements discussed in the body of this paper.

~~SECRET  
RESTRICTED DATA~~

~~SECRET~~  
~~RESTRICTED DATA~~

On the Chinese Choice of Policies for Nuclear Development

As a result of economic limitations, the Communist Chinese have in the next few years a basic choice between policies which at the extreme are as follows:

- a. They can put their emphasis on the short run, producing whatever nuclear-missile systems are possible, starting in the 1960s. Chinese industrial and agricultural capabilities will then still be woefully inadequate for giving a secure base to China as a nuclear power, and the resulting weapons capabilities may be marginal. In this case their other national goals will be set back, including their conventional military capabilities, their civil needs, and possibly their long-run performance in the nuclear-missile field.
- b. They can scale down short-run nuclear-missile efforts, particularly production of equipment for operational use, and divert the resources so saved into raising the general level of output and technology in industry and agriculture. This choice means deferring systematic production of advanced weapons until the 1970s, when Chinese industrial and technical capabilities should be more developed. Efforts on advanced weapons would be at the experimental and prototype level. An exception would

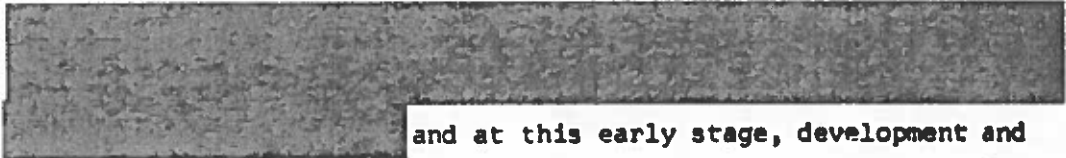
~~SECRET~~  
~~RESTRICTED DATA~~

~~SECRET  
RESTRICTED DATA~~

presumably occur in the production of fissionable materials, because stockpile growth is a cumulative process. The adoption of this alternative policy would possibly produce over time a greater advance in the level of nuclear-missile technology.

In this paper the assumption is generally made that Communist China will choose essentially the first policy. Over the present decade such a course would offer the more serious threats, and these should be weighed. Where the resulting capabilities appear unequal to the intended military task, however, the Chinese will have good reasons not to undertake production and deployment of the systems in question. In such instances the Communist Chinese will probably choose the second policy rather than the first.

#### INTELLIGENCE LIMITATIONS

 and at this early stage, development and production of nuclear materials and modern delivery means in China are beclouded (even for the Chinese) by many uncertainties. The small existing base of intelligence makes extrapolation hazardous; but technology sets strict limits on the outcome.

Despite uncertainties, a quantified description of the threat, with variants, is necessary to develop the implications of a Chinese nuclear capability

~~SECRET  
RESTRICTED DATA~~



~~SECRET  
RESTRICTED DATA~~

SECURITY LIMITATIONS AND ACKNOWLEDGMENTS

Presentation of the subject in this form precludes extended discussion of existing estimates.

Assistance from within the intelligence community has been generously forthcoming. The cooperation of the Central Intelligence Agency has been outstanding, and has been supplemented by the excellent cooperation of experts from the Atomic Energy Commission, the Defense Atomic Support Agency, the Department of State Bureau of Intelligence and Research, the United States Air Force, and other agencies.

~~SECRET  
RESTRICTED DATA~~

~~SECRET~~  
~~RESTRICTED DATA~~

## II. AN ESTIMATE OF CHINESE NUCLEAR REQUIREMENTS

### GENERAL CONSIDERATIONS

External objectives of Communist China that can be directly furthered through an early nuclear capability include:<sup>1</sup>

- 1) Security for the Chinese mainland.
- 2) Consolidation of Communist power in China by the "liberation" of Taiwan.
- 3) Enhancement of China's regional role through reduction of the power and influence of the United States in Asia and the Western Pacific, and through projection of Chinese influence in nearby areas.
- 4) Increased influence and prestige on the world scene, and progress toward eventual superpower status.

Mastery of advanced weapons technology would also appeal strongly to feelings of national pride and thus have important internal advantage. Any sense of urgency which the Chinese may

---

1. For a more detailed treatment, see Harold C. Hinton, Communist China's External Policy and Behavior, UNCLASSIFIED, ISD Study Memorandum No. 18 (IDA, Washington, D. C.). This PACIFICA paper will be issued shortly.

~~SECRET~~  
~~RESTRICTED DATA~~

~~SECRET~~  
~~RESTRICTED DATA~~

have with regard to their nuclear program would be reinforced by a fear that China might be permanently excluded from major nuclear-power status by an American-Soviet "deal" or arms control agreement.

In furtherance of their objectives the Communist Chinese require nuclear forces that are useful in the defense of the Chinese mainland; capable of attacking the cities and forces of non-Communist nations in Asia; capable of effective attack on US forces and military facilities in the Western Pacific and the Far East, whether on their own bases or deployed to forward areas; and capable, in some future period, of attacking the United States and other distant areas.

The Chinese require regional nuclear forces sufficient to impose caution and restraint on American non-nuclear operations, and to decrease the attractiveness to American forces of employing nuclear weapons in situations involving China. A well-developed regional capability could give the Chinese military advantages they now lack in some situations, particularly in hostilities involving Korea or Taiwan, and would permit a Chinese nuclear response to US nuclear attack. Under special circumstances, with sufficiently powerful forces, a pre-emptive attack on US forces might be advantageous to China.

8

~~SECRET~~  
~~RESTRICTED DATA~~

~~SECRET  
RESTRICTED DATA~~

## REGIONAL REQUIREMENTS

### Range

The range requirements for attack on possible objectives are given in Table II-1 on pages 11-12.

Communist Chinese range requirements are relatively short for regional purposes and relatively long for intercontinental purposes. A minimum of 700 nautical miles 700 NM range is necessary to make China a full-fledged regional nuclear power, although half that distance would be useful against Taiwan, Korea, and the northernmost portion of Southeast Asia and in defense of the Chinese mainland. A missile of 1,000 NM range would reach not only Korea and Taiwan, but also Okinawa and all Japan, not to mention Saigon, Bangkok, Manila, Rangoon, and New Delhi. This range would not only suffice for almost all important peripheral targets but would also give some flexibility of deployment within China. A range of 1,100 NM would be advantageous--if it could be achieved without substantial delay in the program--to cover additional peripheral targets and particularly to provide further flexibility of deployment. At the other extreme, a range of 5,000 to 6,000 NM would be necessary to constitute a serious threat to the United States, and at least 6,500 NM would be desirable.

Vehicles with ranges between 1,100 NM and 3,000 NM could only be interpreted as designed for use against the Soviet Union, which

~~SECRET  
RESTRICTED DATA~~

~~SECRET~~  
~~RESTRICTED DATA~~

could be more safely threatened as a byproduct of building forces designed against the United States. This circumstance imposes an operational requirement to jump directly from the 1,100 NM range to the vicinity of 5,000 NM or more.

~~SECRET~~  
~~RESTRICTED DATA~~

~~SECRET~~  
~~RESTRICTED DATA~~

TABLE II-1  
RANGE REQUIREMENTS

Approximate distance in nautical miles  
from a roadhead or railhead in Communist China

0-350 NM

Taiwan	120-200
New Delhi (from Tibet)	270
Vientiane-Udon-North Thailand	290-325
Korca (Pusan)	350

350-700 NM

Okinawa	375
Central Thailand (Khorat)	445
Northern Japan (Misawa)	480
Southern Japan (Itazuki)	480
Saigon (from Hainan)	480
Phnom Penh	490
New Delhi (from Sinkiang)	525
Bangkok	560
Manila	575
Rangoon	600
Central Japan (Tokyo)	620

700-1,100 NM

Karachi	875
Kuala Lumpur	1,030
Sverdlovsk	1,040
Singapore	1,090

1,100-3,500 NM

Guam	1,500
Djakarta	1,605
Moscow	1,765
Adak, Aleutians	1,885
Leningrad	2,005
Darwin, Australia	2,230
Anchorage, Alaska	2,630
Bonn	2,960
Paris	3,090
London	3,140

11  
~~SECRET~~  
~~RESTRICTED DATA~~

~~SECRET~~  
~~RESTRICTED DATA~~

3,500-9,000 NM

Honolulu	3,620
Seattle	3,890
Sydney	3,910
San Francisco	4,250
Los Angeles	4,540
Chicago	4,930
New York	5,200
Washington	5,250
Miami	6,030
New York (from Chungking)	6,630
Buenos Aires	8,000

Numbers

Depending on the type of campaign, Chinese nuclear operations would require attack on approximately the following number of soft<sup>1</sup> targets:

1) Hostilities involving a specific locality such as Korea or Taiwan: 5 to 25.

2) A minimum counterforce operation against unprotected US delivery forces on fixed bases in the Western Pacific: 15.

3) Attack on all important fixed, soft US military targets in the Western Pacific and Far East (including those just mentioned): 60.

At 4 missiles per target (see discussion of CEP requirements, below) for 15 to 85 targets, the Chinese requirement for attack on the above target system would be 60 to 340 missiles.

---

1. In the sense of unhardened; i.e., not underground or otherwise heavily protected against nuclear effects.

~~SECRET~~  
~~RESTRICTED DATA~~

~~SECRET  
RESTRICTED DATA~~

Forces for use against hardened, dispersed, and mobile targets would be additional.

#### Survivability

In view of their nuclear inferiority and their exposure to overheard reconnaissance, the Chinese are likely to consider concealment of missiles, however difficult, as mandatory. They will probably carry secrecy to great lengths to prevent targeting of their nuclear capability. Mobility would also be highly desirable to facilitate concealment and add to the flexibility of (and hence economy in) Chinese nuclear striking forces.

#### Targeting

China and the lands in its vicinity are among the most poorly mapped regions of the world. There is no evidence that the Chinese have succeeded in obtaining geodetic and other data needed for accurate location of targets. With probable inaccuracies at both ends of their trajectories, early Chinese missiles will be militarily useful only against very large, fixed, soft targets, and even then their effectiveness will not be accurately predictable. China will need manned vehicles that can seek their own targets for use against large soft targets when assurance of destruction is necessary, and against hardened, dispersed, and point targets, at least until Chinese weapons and supporting systems begin to achieve real sophistication.

13

~~SECRET  
RESTRICTED DATA~~



~~SECRET~~  
~~RESTRICTED DATA~~


A second targeting problem stems from the need to be able to attack mobile targets in the Western Pacific. Unless and until it acquires an adequate reconnaissance capability, Communist China can only hope to meet this requirement in a minimal manner through the dual use, for reconnaissance and bombardment, of whatever bombers are available.

CEP, Yield, and Reliability

Accuracy and reliability are further difficult requirements for the Chinese.



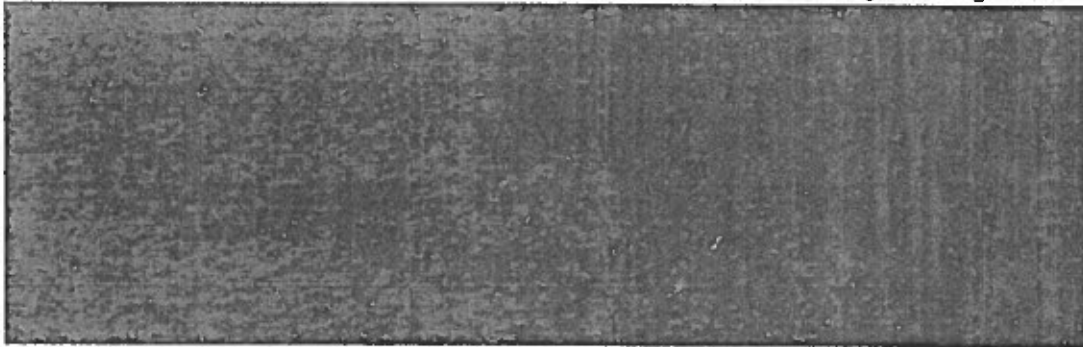
A probable circular error [CEP] of as little as half a nautical mile would reduce the expected disabling damage to only two thirds of the aircraft and structures. Clearly, a ballistic missile with such a small warhead would be an inadequate regional weapon except in very large numbers, or except with unrealistically high reliability and low CEP. A thermonuclear warhead of one-half megaton (500 KT), on a missile with one nautical mile CEP and 60 per cent reliability,



~~SECRET~~  
~~RESTRICTED DATA~~

~~SECRET~~  
~~RESTRICTED DATA~~

could be expected to destroy over 90 per cent of a soft air-base target system only if four missiles were programmed per target.



Warheads adaptable in size and weight to both aircraft and missile requirements will be found desirable by the Chinese to avoid separate warhead development programs for each type of delivery system.

Manned Vehicles vs. Missiles

The Chinese will face a serious problem in trying to obtain favorable military results from their possession of regional forces, because of the difficulty of making such forces survivable against a pre-emptive strike. Targeting and other delivery problems will require the retention of a significant number of manned vehicles for many years, even though such vehicles are difficult to conceal or otherwise protect; whereas rigorous Chinese requirements for survivability appear to call for mobile ballistic missiles.

~~SECRET~~  
~~RESTRICTED DATA~~

~~SECRET  
RESTRICTED DATA~~

Because of the vulnerability of manned vehicles, the Chinese are likely to exaggerate their missile capability and to understate their manned vehicle capability.

#### INTERCONTINENTAL REQUIREMENTS

There is thus far little or no evidence that the Communist Chinese see intercontinental nuclear forces as a priority objective for the immediate future.

With even a primitive nuclear capability, Communist China will be able to develop a minor capacity for direct attack on the United States by means of nuclear mines, short-range sneak sea-borne attacks on coastal cities, and clandestine delivery. During the period when the Chinese are unable to do more, they may at least tacitly threaten the United States with such attacks.

The Chinese are unlikely to divert significant resources to developing a sea-based (submarine or surface) missile capability, in view of the long lead time and high costs involved in obtaining such a capability, and its low utility in the face of US seapower.

A credible nuclear-armed missile or airborne threat against the United States would require a range of at least 6,000 nautical miles, preferably more, and, at a minimum:

~~SECRET  
RESTRICTED DATA~~

~~SECRET  
RESTRICTED DATA~~

1) Either (a) ballistic missiles with warheads of at least one megaton, and a CEP not greater than 3 to 5 NM, for use against metropolitan areas; or (b) crude ballistic or aerodynamic vehicles carrying large (at least 10 MT) warheads with a CEP on the order of 25 to 100 miles, for use in operations aimed at producing damage by fallout.

2) The ability to absorb a first strike attack and/or to prevent the United States, and also probably the Soviet Union, from locating the Chinese force accurately enough to permit an effective pre-emptive or preventive attack. This latter requirement means concealment, and either mobility or hardening. Rapid reaction would not necessarily be required. Excavated storage sites in mountainous areas might be used to provide hardening at low cost.

Missiles with a small CEP would give greater assurance of damage and, as compared to aerodynamic vehicles, would be less subject to post-launch attrition. Sophisticated intercontinental ballistic missiles [ICBMs] would also appeal to the Chinese love of prestige, and would provide an important step into space technology.

For one type of vehicle or another the Chinese minimum requirement, even if only for political purposes, would hardly be less than about 100 missiles deliverable against the United

~~SECRET  
RESTRICTED DATA~~

~~SECRET~~  
~~RESTRICTED DATA~~

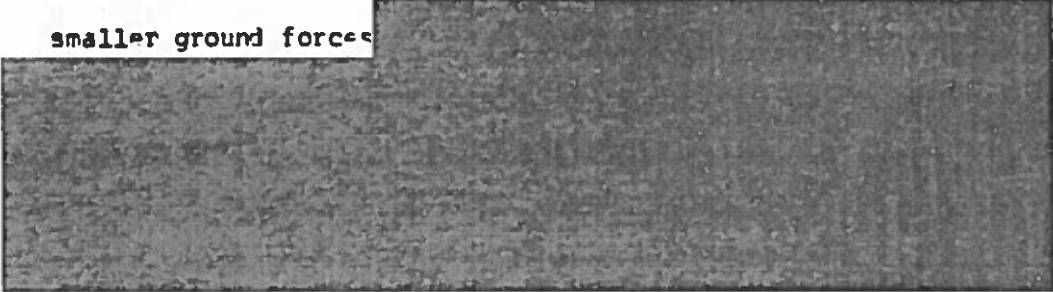
States. Eventually the Chinese would probably want a missile force comparable numerically to those of the United States and the Soviet Union.

OTHER REQUIREMENTS

There is clearly no logical limit to the Chinese need for higher-yield warheads, especially warheads for missiles, just as there is no limit to the need to reduce CEPs and to improve reliability.

Atomic demolitions (primarily a retardation device) and anti-submarine devices would appear to have little utility for China.

Small battlefield types of weapons might be useful to the Chinese, but to a lesser extent than to the United States, whose development of these weapons has been designed to compensate for smaller ground forces



Air defense nuclear armament would be of considerable utility to the Chinese. Such armament could not, however, be available for at least a decade, by which time the Chinese must estimate that the primary nuclear threat to China will be from

~~SECRET~~  
~~RESTRICTED DATA~~

~~SECRET  
RESTRICTED DATA~~

ballistic missiles. Thus, again, little priority is apt to be given to the development of these weapons.

Space achievements are desirable as a matter of prestige, and an 1,100 NM MRBM would probably be used to launch the first small Chinese satellite.

#### SUMMARY OF EARLY CHINESE REQUIREMENTS

For local and regional uses, the Chinese will have requirements for both ballistic missiles and manned aircraft.

The manned vehicle capability, to include if possible a small hunter-killer force, appears necessary to offset targeting inadequacies as well as the lack of accuracy inherent in early Chinese missiles.

The ballistic missile requirement will be for ranges of at least 700 nautical miles, and preferably 1,100 nautical miles. Missile forces should be movable (preferably mobile) and readily concealable. The specific compromise among CEP, yield, reliability, numbers, time, and resource requirements which the Chinese may adopt can only be surmised. However, a reasonable initial goal would include a CEP of not over one nautical mile; a yield on the order of 500 kilotons or more; and an early inventory of not less than 60 weapons, growing to at least 340.

~~SECRET  
RESTRICTED DATA~~

~~SECRET  
RESTRICTED DATA~~

### III. NUCLEAR WARHEADS

#### GENERAL EVIDENCE

Information on the Communist Chinese atomic energy program is fragmentary and often indirect. From available indications the history of the program appears to be as follows:

In the period 1950-55, Communist China engaged in preliminary preparations for a nuclear effort, including prospecting for uranium with Soviet help. The first mining of uranium began near the end of this period, and the mainland regime also recruited about forty capable Chinese nuclear physicists from the West. Chinese technical and industrial capabilities were still so low that independent quantity production of fissionable materials was out of the question.

The key Chinese decisions to start a full-scale military nuclear weapons program, with as much Soviet assistance as could be obtained, were apparently made in stages between 1955 and 1957 (or possibly early 1958). In 1955 the Soviets publicly agreed to supply laboratory quantities of fissionable materials and other assistance to research, and in 1955-56 the Chinese drew up a twelve-year plan for developing science and technology in which

~~SECRET  
RESTRICTED DATA~~

~~SECRET  
RESTRICTED DATA~~

atomic energy was given first priority. During the 1956-57 period Soviet cooperation apparently began on production of nuclear-weapons materials in China. The late 1950s were marked by intensive, high-priority, Chinese efforts with reluctant Soviet assistance. On the research front, the Soviets provided a small five-to-ten megawatt [MW] nuclear reactor and other equipment. They also trained Chinese scientific personnel in Soviet institutions including the Joint Institute for Nuclear Research at Dubna, and helped launch an intensive study of nuclear physics in Chinese universities. Information about the weapons program is much scantier, but the Soviets apparently furnished technical advisers, plans, and certain equipment for various facilities-- uranium mines, ore concentration plants, at least one metallic uranium plant (on which work started in 1957), and, possibly, a small cascade for oralloy production.<sup>1</sup> It is not yet clear whether assistance was given on construction of one or more nuclear reactors for plutonium production, or on facilities for chemical separation of plutonium.

Several uranium mines have been identified, but no ore is believed to have been shipped to the USSR. The quantity and

---

1. A cascade or gaseous-diffusion plant is a facility for raising the proportion in uranium of the fissionable isotope U-235. Oralloy, which is uranium with a high proportion of the isotope U-235, and plutonium are the principal fissionable materials from which nuclear weapons can be made.

~~SECRET  
RESTRICTED DATA~~



~~SECRET  
RESTRICTED DATA~~

quality of ore mined is not known with accuracy. Available evidence is consistent with the accumulation by mid-1962 of the equivalent of several hundred tons of metallic uranium, probably less than two thousand tons.

From about the second half of 1956 there was a subtle change in the Chinese propaganda line on modern weapons and war. In May 1958, came the first public statement, in an article by the air force chief,<sup>1</sup> that in the future the Chinese would have nuclear weapons. Rumors and reports of related busy activity also pointed to a large-scale nuclear effort. In these years there was abundant evidence, much of it "between the lines" in public statements, of friction between the two Communist powers related to Soviet reluctance to see the Chinese armed with nuclear weapons. Some observers suspect that Soviet assistance was not only curtailed, but also designed to limit the Chinese program.

In 1959 photographs were made of a long, unidentified building in Lanchow, near two major hydroelectric projects that offer a prospective future electric power "surplus." The building is a slim rectangle, in the shape of one half of a Soviet U-shaped gaseous diffusion plant (cascade) for uranium isotope separation,

---

1. Liu Ya-lou, "Seriously Study Mao Tse-tung's Military Thinking," Liberation Army Newspaper, May 23rd, 1958. Cf. Leonard Beaton and John Kaddox, The Spread of Nuclear Weapons (London, 1962), p. 133.

~~SECRET  
RESTRICTED DATA~~

~~SECRET~~  
~~RESTRICTED DATA~~

although some experts say the resemblance to Soviet facilities is not close. An ample industrial water supply, and a railroad spur that does not come right up to the building, add to the indications that this might be an incomplete cascade. Power lines did not appear to be installed in 1959. As of early 1962, power lines were still not constructed, and the Yenkou Dam upriver, although complete, was not yet producing electric power; comparisons with 1959 suggested that construction was abandoned or suspended in 1960. The only advance had been in finishing the roof, and the site appeared inactive.

Of course, there is a possibility that this plant was intended as a more innocent industrial facility. If the building were the start of a cascade, it would be a small one, a sort of pilot plant. Even with another similar building added, the resulting complex could use little more than one third of the 595 MW capacity which was planned to be installed at Yenkou, and would produce only a handful of nuclear weapons a year. There appears to be room at the site for no more than two additional similar buildings, without major modifications of the surroundings. A facility of this size would not account for the 1,050 MW of electric power to be installed in a few years at the large nearby Liuchia Gorge dam.

24

~~SECRET~~  
~~RESTRICTED DATA~~

~~SECRET~~  
~~RESTRICTED DATA~~

The Soviet withdrawal of technicians in mid-1960 seems to have included those in the Chinese atomic energy program. The official Communist Chinese line on the military value of weapons and men reverted for some months to a pre-1956 note. Then in November 1960, at the Moscow Conference of Communist parties, the number two Chinese Communist leader, Liu Shao-ch'i,<sup>1</sup> declared that China would have nuclear weapons in the near future, and said that China already had four reactors capable of producing plutonium (an ambiguous statement that could have referred to known research reactors, which are too small to produce quantities sufficient for weapons). Premier Chou En-lai, in a September 1951 interview with Field Marshal Montgomery, reiterated China's intention to obtain nuclear weapons, but implied that the nuclear timetable had been extended to accommodate other pressing needs of China.

Japanese and other newspaper stories pointing to sizable plutonium accumulation from China's small research reactors, including the one in Peiping, do not correspond to other evidence. Research experiments reported in the Chinese technical literature as having been made with the Peiping reactor are incompatible with

---

1. Liu Shao-ch'i is Chairman of the People's Republic of China and second to Mao as Vice-Chairman of the Central Committee of the Communist Party of China. Chou En-lai ranks third in the top party organization and party protocol.

~~SECRET~~  
~~RESTRICTED DATA~~

~~SECRET  
RESTRICTED DATA~~

its operation for a significant output of weapons-grade plutonium. There is, however, indirect evidence of possible plutonium production on a much larger scale than these unclassified reports would suggest.

The most important [redacted] indications points to the probable operation, from early 1961 and possibly from mid-1960 (but with serious delays and difficulties), of a plant for producing metallic uranium, the exact site of which has not been pinpointed. This plant is believed to have been built, starting in 1956-57, with Soviet help, and is believed to have been almost complete at the time of the withdrawal of technicians. The plant presumably is now turning out uranium slugs for use in a reactor or reactors for producing plutonium. By correlating these fragments of information with the known mining and ore-concentrating activities, and by making assumptions regarding the plant's capacity--probably not much over one ton of metallic uranium output a day--it is possible to guess that by mid-1962 China had processed several hundred tons of metallic uranium, perhaps 500 tons, but probably less than 1,000 tons.

A major uncertainty stems from the failure to locate a plutonium-producing facility or to obtain positive evidence of its existence. Presumably the Chinese have taken great pains to hide the reactor and its associated plutonium-separation complex.

~~SECRET  
RESTRICTED DATA~~

~~SECRET~~  
~~RESTRICTED DATA~~

In view of the Chinese need for concealment and secrecy to avoid being targeted and of the apparent existence of a uranium metals plant, a reactor may be assumed to be in existence and probably already in operation. This assumption makes it possible to estimate the timing of the first Chinese nuclear test on the basis of production of the metallic uranium plant and of other countries' experience.<sup>1</sup>

#### CHOICES ON FISSIONABLE MATERIALS PRODUCTION

##### General

The principal choice in fissionable materials production is whether to produce plutonium, or alloy [U-235], or both.<sup>2</sup> Plutonium is produced from natural uranium through bombardment of U-238 with neutrons, usually in a nuclear reactor. The production problem for alloy and lesser degrees of enriched uranium is one of separating U-235 from the common isotope U-238;<sup>3</sup> the two isotopes differ for purposes of separation only in characteristics relating to their slightly different mass.

---

1. See below, pp. 34-39.

2. U-233 is also fissionable, but its co-product U-232 has undesirably heavy radiation emission, making U-233 for practical purposes an inferior weapons material.

3. The concentration of U-235 in natural uranium is only 1/140th or 0.714%. Alloy with 93.5% U-235 is known as "top product." Any uranium in which the proportion of U-235 has been raised is considered enriched.

~~SECRET~~  
~~RESTRICTED DATA~~

~~SECRET~~  
~~RESTRICTED DATA~~

### Military Considerations

Apart from fabrication and handling difficulties, plutonium is a little better than oralloy in most military uses, permitting a greater degree of miniaturization for a device of a given yield. "Clean" plutonium, that is, plutonium containing very little of the undesirable isotope Pu-240, is better than oralloy in almost all respects, but is expensive. The Pu-240 content of plutonium increases, so that the quality decreases, with the period of irradiation in producing the plutonium within a reactor--but the longer the irradiation period, the less expensive is the plutonium. A compromise is thus necessary between purity and low cost.

Pu-240 has the effect of increasing the neutron radiation background, multiplying problems of safety and the likelihood of predetonation (preinitiation), which can greatly lower yield.

[REDACTED]

Enriched uranium--not so enriched as to be called oralloy-- is necessary to a military nuclear program for at least two relatively sophisticated purposes: first, to permit boosting<sup>1</sup> of fission weapons, by making possible the production of significant quantities of tritium, and second, to permit the construction of

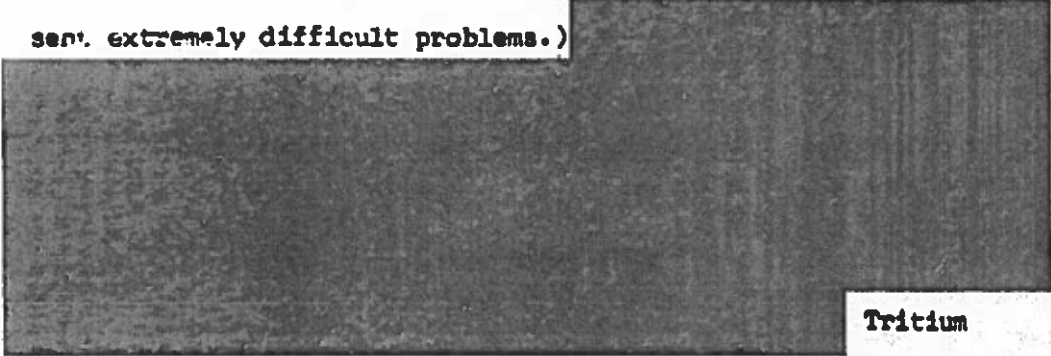
---

1. Boosting refers to injecting a gas mixture of deuterium and tritium in the core of an implosion device.

~~SECRET~~  
~~RESTRICTED DATA~~

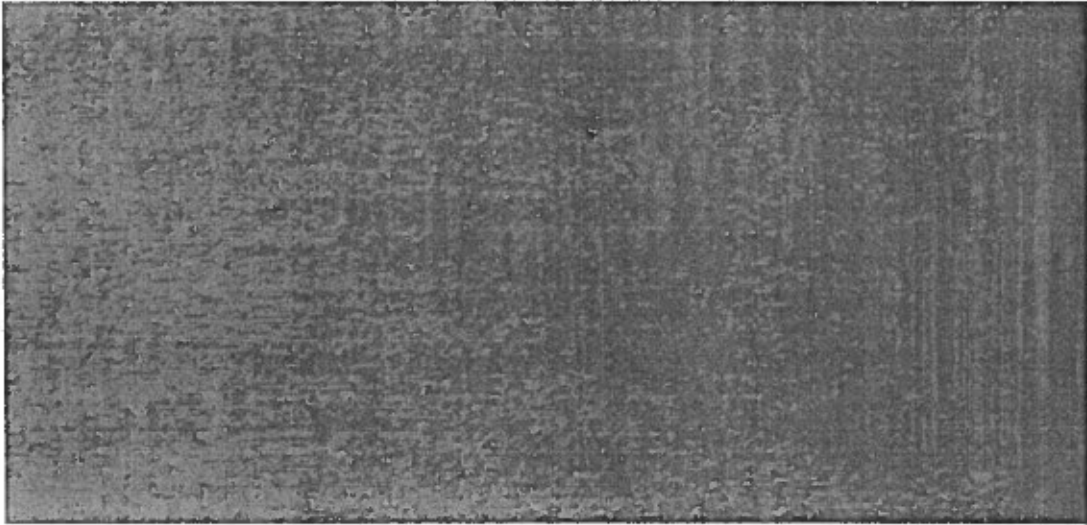
~~SECRET~~  
~~RESTRICTED DATA~~

military reactors, for example, power plants for nuclear-powered submarines. (Plutonium-fueled reactors are impractical and present extremely difficult problems.)




Tritium

must be produced in a reactor fueled by enriched uranium, because the lithium used for tritium production "poisons" the reaction and makes use of natural uranium impractical. Enriched uranium also permits more economical production of plutonium.




~~SECRET~~  
~~RESTRICTED DATA~~


~~SECRET~~  
~~RESTRICTED DATA~~



Without boosting, however, the Chinese will be restricted to lower yields for a given weight. For this reason if not for others, they will probably want to advance production of enriched uranium, if not or alloy, early in their program.

Production Considerations

Large-scale plutonium production, although believed feasible by linear acceleration, is accomplished in the weapons programs of the United States, Great Britain, the Soviet Union, and France by means of relatively large--and occasionally extremely large--reactors, which may be fueled by natural uranium or by a combination of natural and enriched uranium. Quantity production of plutonium may be attained with reactors having thermal outputs of 100 to 350-megawatts; the largest reactors exceed 1,000 MW thermal power. The US cost of plutonium, of which the cost of the metallic uranium reactor fuel is a large proportion, is on the order of  per kilogram depending on quality (i.e., Pu-240 content).



~~SECRET~~  
~~RESTRICTED DATA~~



~~SECRET~~  
~~RESTRICTED DATA~~

Oralloy, and enriched uranium in general, is produced in the United States, United Kingdom, and Soviet Union in gaseous diffusion plants (cascades). The French, having decided that plutonium was an easier material with which to start, have not yet moved into oralloy production. They have, however, spent nearly one billion dollars on their first cascade, without as yet putting the plant into production. When the United States first started to produce oralloy in 1944 the atomic-energy program used two other processes, relying mainly on the electromagnetic or mass spectrographic process. Gaseous diffusion, which started operations in 1945, proved to be much less expensive, and the other methods were dropped. For financial reasons other possible processes of uranium-isotope separation have also been rejected. Among these, the centrifuge process has been subsequently developed by the West Germans. The security classification on related research has been reinstated by the United States, although for large-scale production the centrifuge process is not yet competitive with gaseous diffusion.

A great deal of information on reactor technology, applicable to plutonium production, has long been available in the unclassified technical literature, including the design of 150 to 300 MW reactors for electric power production; and the Chinese since 1958 have had some experience operating small reactors

~~SECRET~~  
~~RESTRICTED DATA~~

~~SECRET~~  
~~RESTRICTED DATA~~

supplied by the Soviets. Plutonium production is therefore presumably something the Chinese will be able to master; difficulties should prove only moderate, and should center on details of engineering and execution.

Technical problems with a reactor include producing uranium and graphite of high purity, designing and operating the reactor, and separating the plutonium afterward. The latter is a major chemical engineering project that gave the French some difficulties. Because plutonium is radioactive, highly toxic, starts fires, and can cause explosions, plutonium separation and weapon fabrication must be remote-controlled.

It is an interesting commentary on the economic conditions in different countries that in the United States oralloy is considerably cheaper for a given fission yield (all things considered) than plutonium. US oralloy costs about [redacted] per kilogram. In the Soviet Union oralloy is likewise produced in larger quantity, and is believed to be cheaper, than plutonium. In countries such as China, however, the reverse is likely to be true because oralloy production (U-235 separation) is likely to be extremely difficult and expensive.

Every method of producing oralloy or enriched uranium is essentially a brute-force method relying on the repetition thousands of times of processes each of which has a very small

~~SECRET~~  
~~RESTRICTED DATA~~

~~SECRET~~  
~~RESTRICTED DATA~~

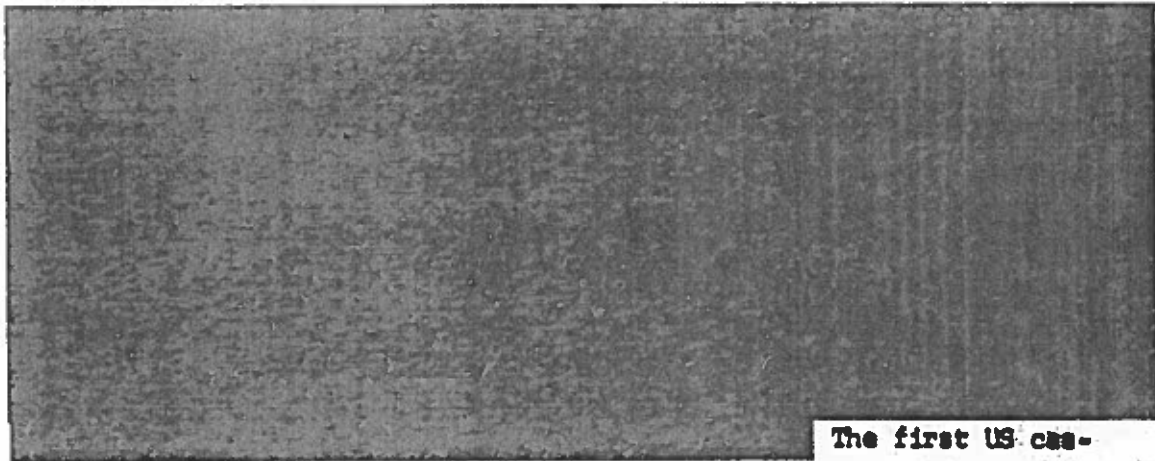
capacity for increasing the percentage of U-235. The engineering, whether in a cascade or with an array of centrifuges, is of a fine-precision nature with extremely demanding manufacturing tolerances. In a cascade the highly corrosive gas, uranium hexafluoride, is pumped into several thousand chambers or stages, in each of which it is forced through a fine metallic membrane, which ideally allows only individual molecules to pass. This system requires thousands of huge compressors and other special machines, with rotors and other parts coated with nickel or aluminum against the corrosive gas. The complex "plumbing" includes special seals. Total electric power consumed by the three US cascades today is approximately equal to the electric power produced in China. (By comparison, the large plutonium reactor complex at Hanford, Washington, requires about one eighth as much electric power as a single US cascade and such a complex can furnish the thermal power for its own electric needs.)

In general, centrifuges present equal or even greater engineering difficulties than cascades and involve higher capital costs; but they could potentially save on operating costs. A US centrifuge plant designed in the 1940s but never built would have had 30,000 individual centrifuges connected by a complex system of pipes and valves. The design of a centrifuge involves serious alloy and rotor design problems connected with the high speed of rotation.

33

~~SECRET~~  
~~RESTRICTED DATA~~

~~SECRET  
RESTRICTED DATA~~



The first US cascade and its additions and successors are still a tribute to US engineering skill.

In view of these considerations and of Chinese shortages of engineers, technicians, and skilled manual labor, it is generally expected that China will put emphasis on the use of plutonium rather than or alloy for weapons.

FACTORS INFLUENCING THE TIMING OF THE FIRST TEST POSSIBILITIES OF SERIES TESTING

Most estimates assume that the first fissionable material produced by China in testable quantity will be plutonium, and that it is likely to be produced in a reactor or reactors fueled with natural uranium, presumably with metallic uranium slugs from the metals plant that probably began operating about January 1961.



~~SECRET  
RESTRICTED DATA~~

~~SECRET~~  
~~RESTRICTED DATA~~

The process of plutonium production starts with producing enough metallic uranium for a reactor (100 to 200 tons), loading the reactor, getting it to go critical, and then raising it to full power, the last of which can take several months the first time. The uranium is irradiated for several more months by neutrons produced within the pile. Then the reactor is shut down, much of the fuel is removed, and the slugs are "cooled" for 60 to 90 days to reduce radioactivity. Finally, the processing of the irradiated uranium begins in a plutonium-separation plant that probably is capable of processing each day no more than one or two tons of the uranium from the pile. The processing of [REDACTED] [REDACTED] should yield [REDACTED] of plutonium required for a single nuclear test. Then the plutonium must be fabricated into a nuclear device.

The allowable "cooking" time, and therefore the quantity of plutonium obtained from one batch of uranium, is limited, as already suggested, by the fact that as time goes on some of the plutonium is converted into undesirable isotope plutonium-240.

From the time concentrated ore arrives at the uranium metal plant, up to the point of obtaining enough plutonium for one test, the entire process described above is likely to take anywhere from 18 to 30 months or more depending on (1) the size of the reactor and capacity of the uranium metal and plutonium-

~~SECRET~~  
~~RESTRICTED DATA~~

~~SECRET~~  
~~RESTRICTED DATA~~

separation plants, (2) irradiation time in the reactor, and (3) the degree of difficulty experienced in producing uranium metal of the requisite purity and in operating the reactor and plutonium-separation plant for the first time. Numerous possibilities exist for a delay of the program, notably as a result of accidents and errors.

Assuming that the Chinese (1) use metallic uranium produced beginning as far back as early 1961, (2) build a reactor of about 200 MW thermal power (requiring about 200 tons of uranium), (3) aim at an early buildup of their military stockpile at the expense of slightly retarding the first test, and (4) experience difficulties comparable to those of the French, the production period is likely to be 24 to 30 months. Thus plutonium for the first test could become available between January and July of 1963. The date would be later if the metals plant had a lot of "down time" or produced an inferior product in early 1961, or if operating difficulties exceeded those of the French, either for lack of technical expertise or because of the general economic crisis in China.

How long the Chinese, having the plutonium, would then require to fabricate a device and explode it in an instrumented test depends on outside help received, if any; the extent of Communist Chinese familiarity with United States, Soviet, British,

~~SECRET~~  
~~RESTRICTED DATA~~

~~SECRET~~  
~~RESTRICTED DATA~~

and French tests, weapons, and calculations; and Chinese fabrication difficulties with plutonium. The resulting delay caused by fabrication time could be from 3 to 12 months. This gives a spread for the first test, assuming 24 to 30 months for the production of plutonium, of from April 1963 to July 1964. As indicated, operating difficulties and accidents could cause further delays; economic difficulties have probably done so already. On the other hand, the Chinese might hurry the first test<sup>1</sup> in a special effort to obtain an early propaganda vehicle.

Assuming that the Chinese had no technical difficulties whatever, knew how to fabricate a device, did in fact put their metals plant into effective operation in January 1961, and hurried to achieve early propaganda benefits at some possible expense to the accumulation of a stockpile, the first test could have taken place as early as 21 months after January 1961, that is, by October 1962. At the other extreme, if the metals plant has not been operating effectively, and in view of economic difficulties, this test could be delayed by as long as several years. Most US experts feel that the Chinese program has probably already slipped at least one year compared to an early 1963 schedule based on technical feasibility.

---

1. E.g., by irradiating the pile only long enough on the first cycle to produce plutonium for one test.

~~SECRET~~  
~~RESTRICTED DATA~~

~~SECRET  
RESTRICTED DATA~~

It is important to note that the scale and timing of the subsequent buildup of the Chinese stockpile depends only in a minor way, on whether the first test is in 1963, or in 1964, or even 1965. Assuming that the metals plant has in fact operated since 1961, the later the first nuclear explosion, the more rapid is likely to be the subsequent accumulation of a stockpile, and the closer the second test is likely to be to the first, especially if the delay is not caused by faulty basic design of production facilities. If the Chinese drive toward an early stockpile and, although experiencing few technical difficulties, do not conduct their first test until late 1963 or 1964, they could be testing two or three other devices within six months after the first. If they do not hurry for propaganda purposes, their plutonium-production cycle could be such that plutonium production becomes virtually continuous,<sup>1</sup> except for "down time" caused by accidents and other troubles, starting with the plutonium for the first device. Thus, estimates of the timing of the first test are somewhat independent of stockpile estimates, which depend instead on the program for setting up production facilities for plutonium and or alloy.

It is interesting to compare the prospective Chinese lead time for "joining the nuclear club" with those of other nuclear

---

1. That is, no sooner is the reactor unloaded for the cooling of the irradiated pile than another pile is loaded and made to go critical; and plutonium separation facilities are kept steadily at work.

~~SECRET  
RESTRICTED DATA~~



~~SECRET~~  
~~RESTRICTED DATA~~

powers. Presumably the Chinese decision to produce nuclear weapons was made about 1956, and intensive efforts on construction of facilities began in late 1957 or 1958 at the latest. Chinese industrial capabilities, however, were more spotty and backward at that time than those of any previous nuclear power. If the first Chinese test takes place as early as 1963 this will represent a lead time of approximately six years, based on the period of full-scale effort. By comparison, the French achieved a first test five and one-half years after beginning a plutonium-production program that had already been authorized two years earlier, and four and one-half years after the decision to enlarge and accelerate the program with military funds. The Soviet Union and the United States both had "crash" programs that took a little under four years.<sup>1</sup>

#### WEAPONS DESIGN TECHNOLOGY

##### First Deliverable Device

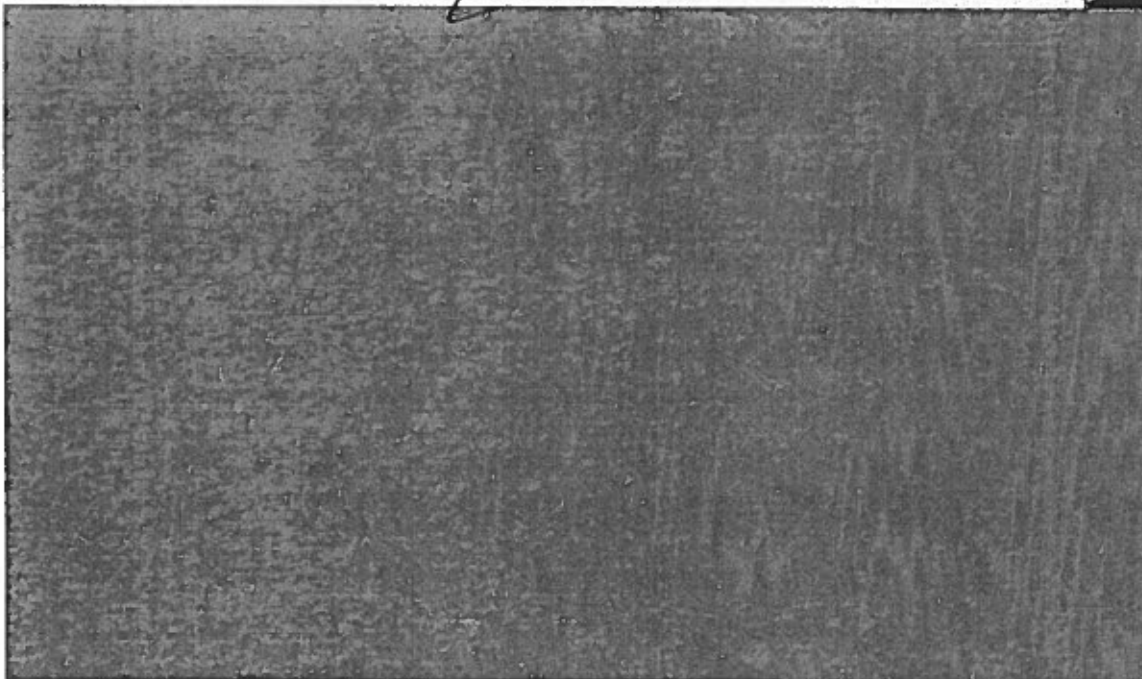
The prevailing estimate is that the first deliverable Chinese nuclear weapon will be a crude six- to ten-thousand-pound fission device based on a plutonium-implosion system. On military

---

1. This assumes that the Soviet "crash" program dates from shortly after the A-bombing of Hiroshima in 1945. Some progress had been made prior to 1941; the Soviet nuclear effort was apparently downgraded when the Germans gave up their high-priority effort in 1941. See Arnold Kramish, Atomic Energy in the Soviet Union (Stanford, 1959).

~~SECRET~~  
~~RESTRICTED DATA~~

~~SECRET~~  
~~RESTRICTED DATA~~



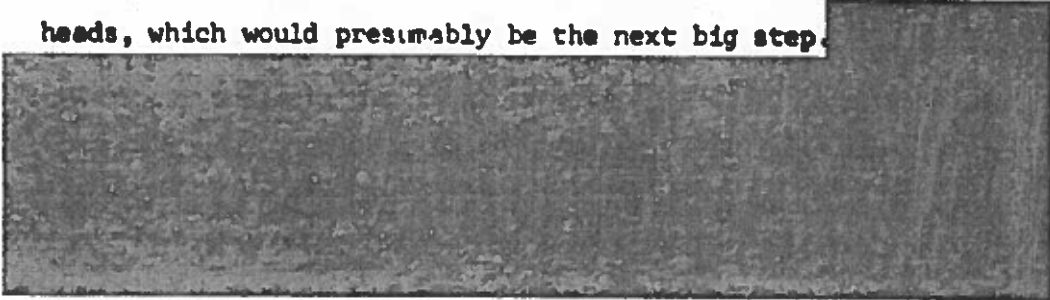
A powerful argument can therefore be advanced that the Chinese will try to jump straight to a 2,500-pound plutonium-implosion device, starting possibly with the first nuclear test. Any effort on a 6,000-pound bomb for which there was no adequate delivery means would be unnecessarily wasteful of scientific and engineering skills. There is also good reason to believe that, having experimented extensively beforehand with non-nuclear explosives in relation to implosion techniques, the Chinese could achieve an initial weapon of the lighter weight without severe delay to their warhead development program. A deliverable 2,500-lb. device might be available within one to two years after the

~~SECRET~~  
~~RESTRICTED DATA~~

~~SECRET~~  
~~RESTRICTED DATA~~

first successful Chinese nuclear test. However, the Communist Chinese may choose to conduct an earlier test with a larger device, as a physics experiment, a political gesture, and a more conservative but surer means of reaching the smaller weight class.

The same 2,500-pound device should be capable, with only external modifications, of serving as a warhead for the medium-range ballistic missiles [MRBMs] that the Chinese are apparently trying to build, and as a ready-made primary for conducting the nuclear tests necessary for the development of thermonuclear warheads, which would presumably be the next big step.



#### First Thermonuclear Weapons

The problem of developing thermonuclear weapons is of quite a different order than the problem of producing atomic weapons, which is largely an industrial question. The atomic-to-thermonuclear problem is largely a question of scientific and technical imagination, and it would be dangerous to base estimates on the idea that a people such as the Chinese were lacking in imaginative power, or in scientific talents.

~~SECRET~~  
~~RESTRICTED DATA~~

~~SECRET  
RESTRICTED DATA~~

A still current estimate suggests that the Chinese will not be able to attain deliverable thermonuclear [TN] weapons until about 1970; but this estimate should probably be revised in the direction of shortening the required time. Most experts seem to feel that the problem is not excessively difficult and should be soluble within five or six years of the first atomic test. Thus 1969 appears a feasible date, assuming a first fission test in 1963 or 1964.

Advancement toward a thermonuclear capability must proceed in steps, each of which requires at least one and probably several nuclear tests. The Chinese should be able to take an initial fission device, such as the 2,500-pound device just mentioned, and use it as the primary in a series of experiments designed to obtain information on radiation flow, temperatures, pressures, casing materials, secondary behavior, and other aspects of thermonuclear design. For such tests it would be desirable to have highly sophisticated instruments, but up to a point mathematical computations and a "trial and error" procedure with more numerous tests can be used as a substitute for good instrumentation.

Information relevant to TN design can be gathered as a by-product of any nuclear test, if the Chinese can produce the instrumentation. The first tests specifically aimed at a thermonuclear device would probably involve a mockup of the secondary

~~SECRET  
RESTRICTED DATA~~

~~SECRET~~  
~~RESTRICTED DATA~~

with measuring devices attached to record such items as compression and temperatures.

[REDACTED]

For all these tests the Chinese would be advantaged if they fully understood the behavior of their primary.

One interesting facet of the problem is the possibility that the Chinese intelligence services could get hold of TN weapon designs from any of the four nations that by then should be thermonuclear powers.

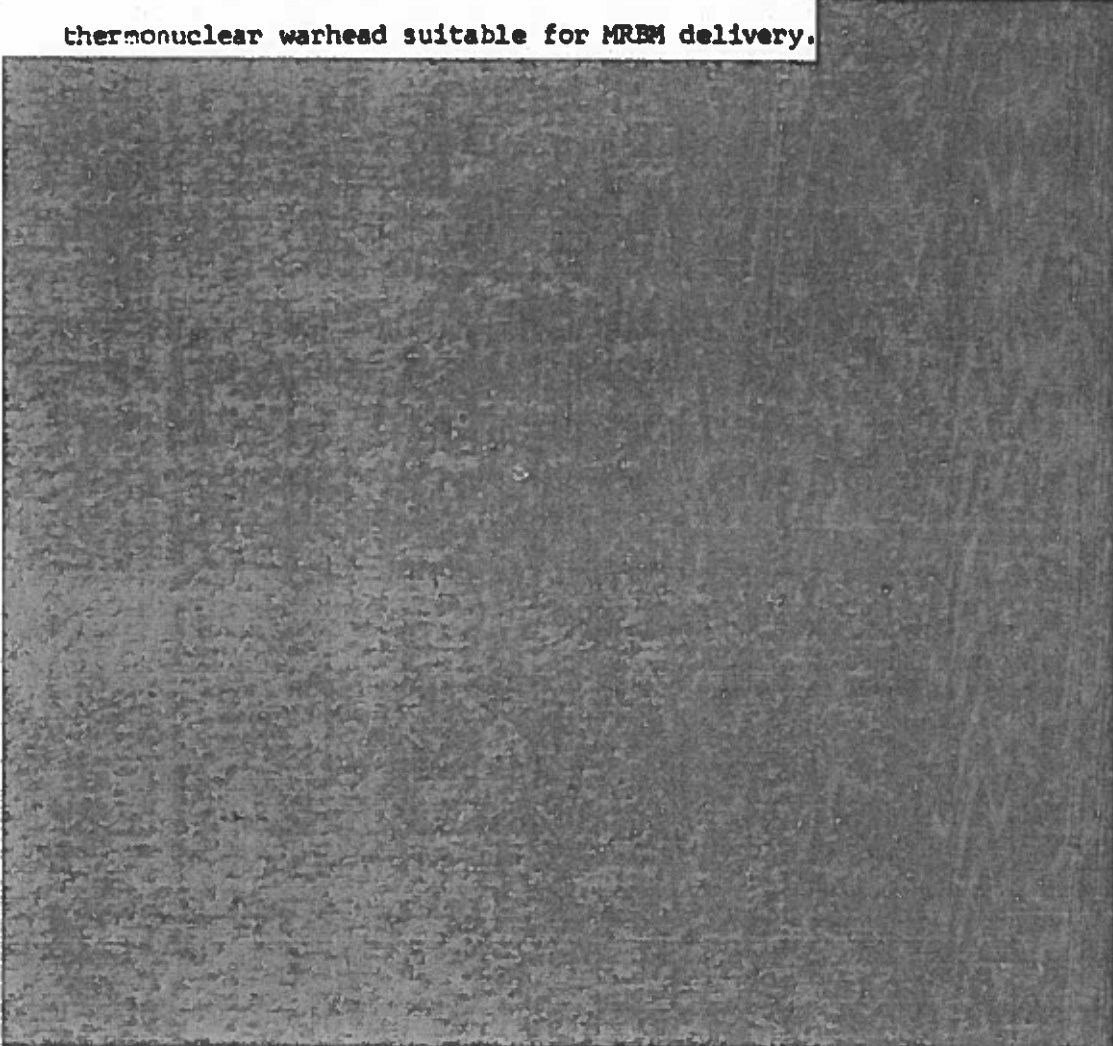
[REDACTED]

The results of even one good "steal" might save two years' experimentation. As it is, the Chinese will be considerably helped by their knowledge of the shapes and approximate weights of US warheads. This can be obtained from publicly available sources. Such information can be supplemented by covert operations in which the Chinese doubtless attain some success, in Europe if not in the United States.

~~SECRET~~  
~~RESTRICTED DATA~~

~~SECRET~~  
~~RESTRICTED DATA~~

When a thermonuclear device is developed for use with the earliest primary, it could be delivered by Badger or Bull. Again, however, the emphasis will probably be on producing a smaller thermonuclear warhead suitable for MRBM delivery.



~~SECRET~~  
~~RESTRICTED DATA~~

Economizing Nuclear Materials

Something has already been said on the problems of converting weights of plutonium, or alloy, or combinations of the two into nuclear weapons.

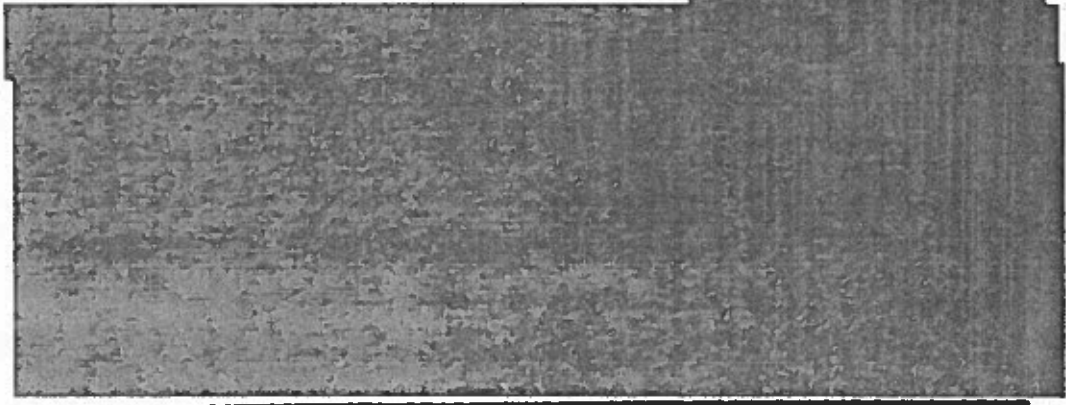
Underlying considerations include the following:

1) 

2) The critical mass for plutonium, without 

 tamping.<sup>1</sup>

For or alloy the comparable critical masses



1. Tamping refers to surrounding the fissionable material with a neutron-reflecting substance such as depleted natural uranium.

~~SECRET~~  
~~RESTRICTED DATA~~

3)



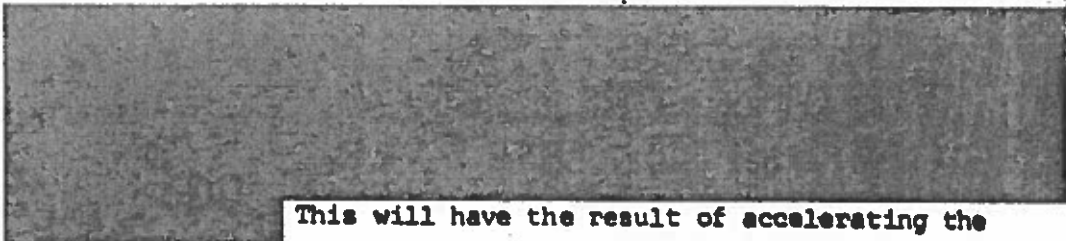
4)

1. See below, pp. 50, 51, 60, and 61.

~~SECRET~~  
~~RESTRICTED DATA~~



~~SECRET~~  
~~RESTRICTED DATA~~



This will have the result of accelerating the effective growth of the stockpile, compared to the figures shown in the tables.

#### STOCKPILE PROJECTIONS

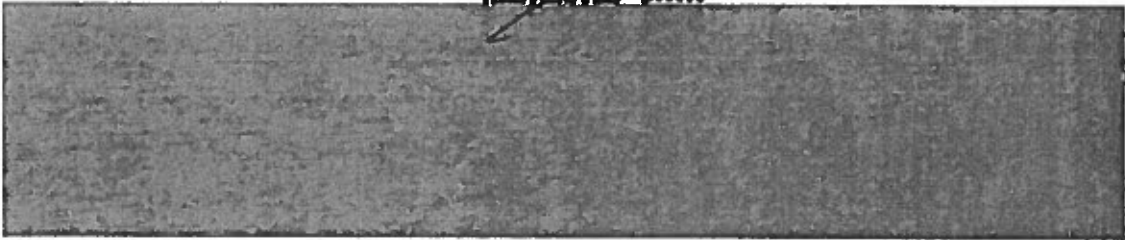
##### Plutonium Production

As suggested above, stockpile projections may be made with little reference to the date of the first nuclear detonation, assuming that Chinese uranium metals plants and plutonium producing facilities are adequately designed. The size and nature of the program for setting up production facilities for plutonium and alloy are most important for stockpile purposes. Of course, some types of delays in the Chinese program could enforce a time lag of one or more years on otherwise valid stockpile projections.

The experiences of other countries suggest that the scale of the initial plutonium effort will be a reactor of 150- to 200-MW thermal power, unless a pioneer 100-MW reactor is built to hurry the first test explosion.

~~SECRET~~  
~~RESTRICTED DATA~~

~~SECRET~~  
~~RESTRICTED DATA~~



The first four nuclear powers all started serious production of plutonium for weapons with reactors in the 150- to 220-MW thermal power range.<sup>1</sup> On this basis it is reasonable to suppose that the Chinese will start near this range, probably close to 200 MW, and that they will serialize the design long enough to build several that can utilize the experience of the first. Power output of the basic reactor should improve with experience. Perhaps some years from now the Chinese will jump to a large reactor, on the order of 1,000 to 2,000 MW, but there is no pressing reason for doing so until they become very sophisticated, possess enriched uranium, and seek to economize by way of a new investment.

---

1. The French started with a small reactor (G-1), which achieved only 30 MW, and then jumped to a second (G-2) at 200 MW, and a third (G-3) that was a copy of the second. The copy was under construction long before the original went critical and was phased into production about 18 months after its twin. The British, who pooled nuclear information with the US, have built a series of some ten plutonium-producing reactors in the 180- to 300-MW range (power output improves with experience), all more or less identical to the first one. The US series of reactors at Hanford has included some "monsters" of over 1,000 MW, but the first was in the same medium-sized range (after a 1-MW model to demonstrate the method); and the initial Soviet experience was also in this range.

~~SECRET~~  
~~RESTRICTED DATA~~

~~SECRET~~  
~~RESTRICTED DATA~~

By assuming an initial reactor in the 100- to 250-MW range followed by a series of similar reactors, it is possible to arrive at numerical stockpile projections. For this purpose 1 January 1961 will again be taken as the approximate date on which the Communist Chinese uranium metals plant began to produce slugs suitable for use in a reactor.

As a first estimate, it will be assumed that the Chinese are able to design and build a reactor of 200-MW thermal power, that a second similar reactor will be built and put into operation two years after the first, and, after that, new reactors of the same size will be introduced at a rate of one each year. This would, of course, imply a matching buildup of uranium mining,<sup>1</sup> metallic uranium output, and plutonium separation. Accompanying assumptions must be made regarding the rate of improvement in reactor power levels for this one design; the test schedule; the amount of "down time" in the process, for which 25% reduction in output will be allowed; the timing of the production process; and so on.

The results are shown in Table III-1. It must be remembered that any alloy production would add to the warhead stockpile. The projection is carried to the beginning of 1970, by which time seven reactors are assumed to be in operation.

---

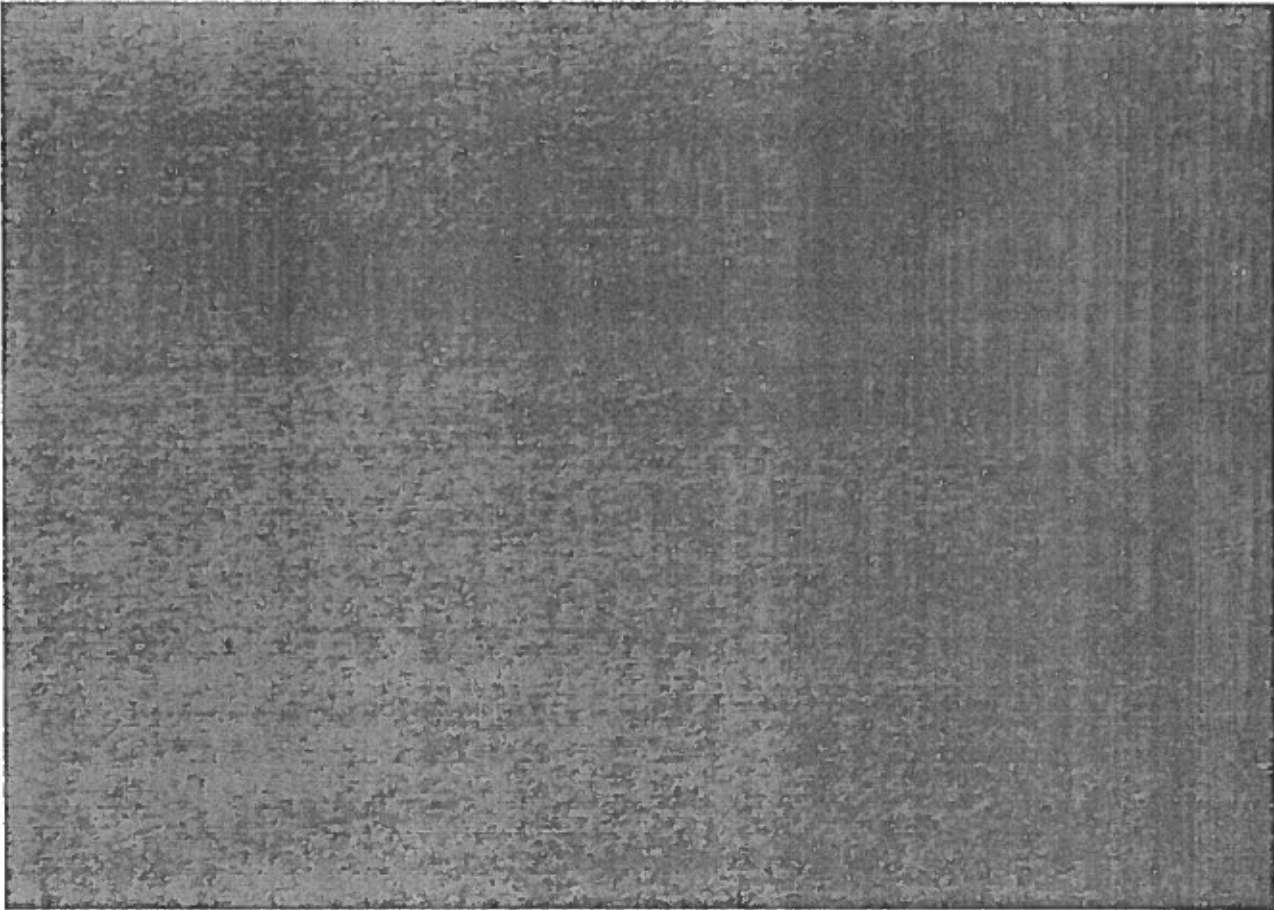
1. There is probably no serious limitation on the natural uranium available in China, but the remote location of most mining areas could impose high costs in terms of investment and transportation.

~~SECRET~~  
~~RESTRICTED DATA~~

~~SECRET  
RESTRICTED DATA~~

TABLE III-1

PLUTONIUM OUTPUT AND WARHEAD STOCKPILE FROM  
A SERIES OF REACTORS OF INITIAL 200-MW DESIGN



~~SECRET  
RESTRICTED DATA~~

~~SECRET  
RESTRICTED DATA~~

Assumptions:

1. First test occurs about the end of 1963.
2. Reactor construction schedule is as shown in text (p.49): first reactor goes critical December 1961, the next two years later, then one per year until December 1968.
3. Power level of reactors rises 33-1/3 MW per year after late 1963. By end of 1969 all reactors are operating at 400-MW thermal power. Each new reactor falls 45 MW short of current power output of older reactors its first time in operation.
4. Reactors operate on equivalent of nine-month cycle including six months for irradiating time. The first reactor's first cycle requires an extra three months for learning time.
5. After discharge from reactor an average of eight months is required for separation of plutonium and fabrication into weapons.
6. Fabrication of deliverable weapons starts in second quarter of 1964. If Chinese must wait longer for an acceptable design, they would of course be temporarily limited to accumulation of plutonium.
7. Output determined by assumptions above is reduced 25% to allow for technical difficulties and accidents.
8. Large number of tests is made as shown to accelerate weapons technology.

~~SECRET  
RESTRICTED DATA~~

~~SECRET~~  
~~RESTRICTED DATA~~

Some observers may consider this an unrealistically rapid buildup. It is accordingly labeled "moderately fast," and slower alternatives are offered. In considering this schedule, however, it must be remembered that technical and economic delays might cause as much as a two- or three-year lag in the dates, in which case the Chinese might be hurrying to retrieve the lost ground.

A second estimate is made by assuming that the initial reactor pile is only 100 MW. A design level of 150 MW is achieved the second time the reactor is operated. A similar reactor is again put in operation two years after the first, but this time new reactors are added every 18 months rather than every year, and they continue to be of this smaller type. The other assumptions are identical. By 1970 five reactors are in operation rather than seven.

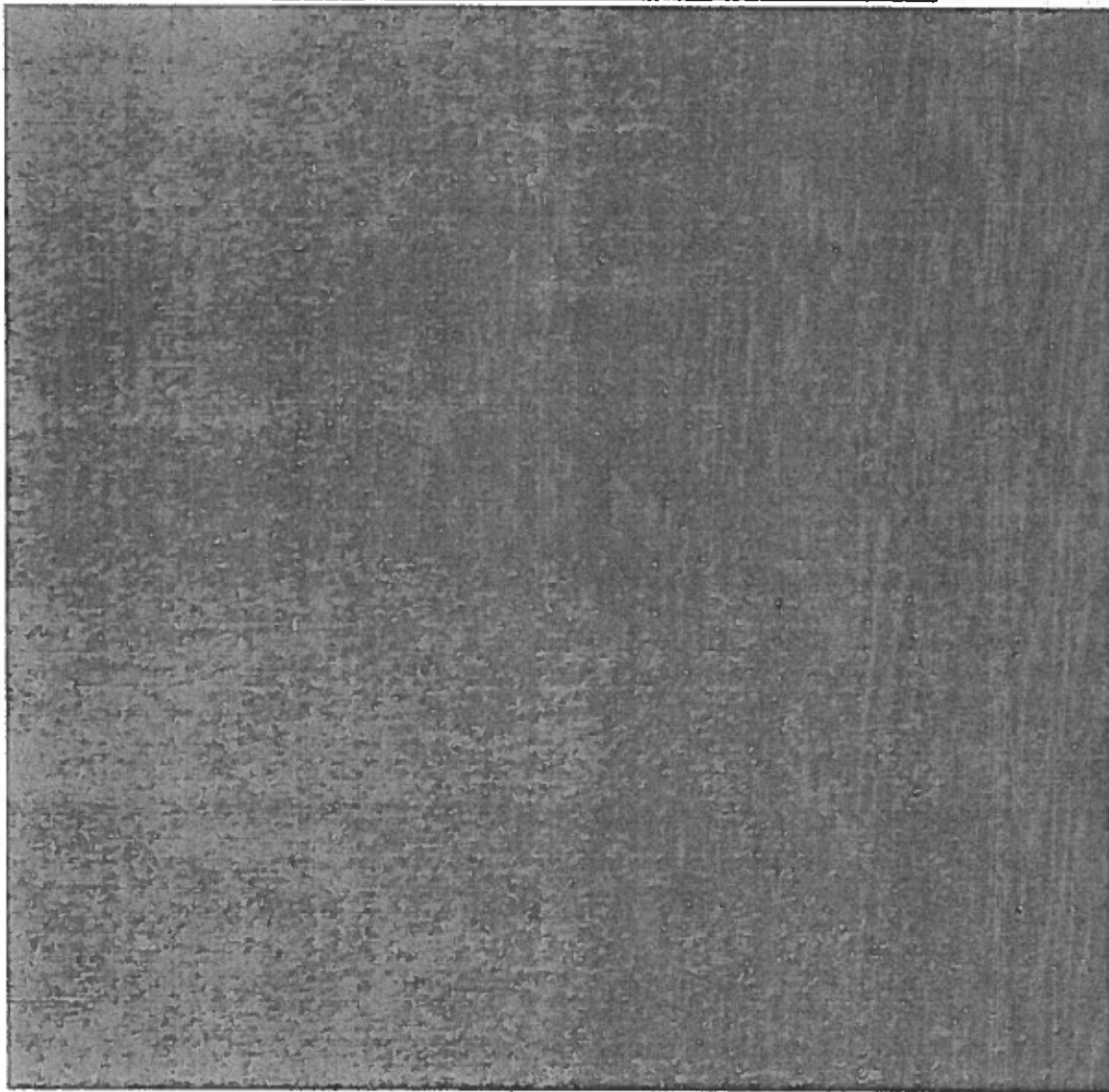
Together these two projections furnish a "moderately fast" and a "moderately slow" picture. For those who are extremely skeptical of Chinese industrial capabilities, the Communist Chinese priority on nuclear weapons, or the emphasis on plutonium, a third series is appended in Table III-2, based on only two reactors of 150-MW design (the first produced 100 MW on the first cycle), with no follow-on. The same brisk pattern of tests is still assumed.

~~SECRET~~  
~~RESTRICTED DATA~~

~~SECRET~~  
~~RESTRICTED DATA~~

TABLE III-2

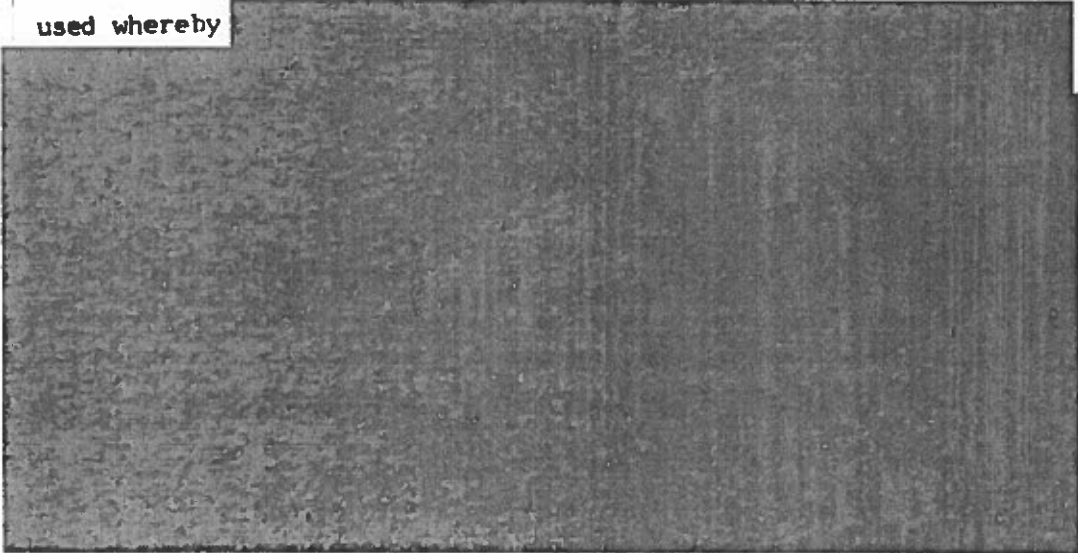
PLUTONIUM OUTPUT AND WARHEAD STOCKPILE FROM  
A SERIES OF REACTORS OF INITIAL 150-MW DESIGN



~~SECRET~~  
~~RESTRICTED DATA~~

~~SECRET~~  
~~RESTRICTED DATA~~

In each of the tables, as already indicated, a conversion is used whereby



#### Oralloy Production

Chinese production of plutonium will presumably be supplemented at some point, perhaps already in the late 1960s, by production of oralloy. The most likely guess is that China, like the other nuclear powers, will build a gaseous diffusion plant. The Chinese may already have been assisted in cascade technology by the Soviets in the 1956-60 period. If the building seen in Lanchow is the start of a small cascade, the Soviets must have given some help, probably including the design of the basic machinery.

There are two approaches to estimating future Chinese oralloy production: to assume that the first production will

~~SECRET~~  
~~RESTRICTED DATA~~



~~SECRET~~  
~~RESTRICTED DATA~~

come from the building at Lanchow, or to compare other countries' experiences and make an independent projection of what the Communist Chinese might reasonably be expected to do.

The present facility at Lanchow, if a cascade, and if and when machinery is put in place under the roof, should utilize only 50 to 100 MW of electrical power, probably 75 MW (depending on the technology), a figure that may be compared to the more than 2,000 MW for a US gaseous diffusion plant. As already noted, hydroelectric projects not yet complete would provide an unexplained future power surplus that could reach an eventual level of as much as 1,000 MW, well in excess of known requirements in the Lanchow area.

If the unidentified building was intended as a complete cascade with very small-sized machinery, it can be estimated on the basis of the roof area that, operated at an efficiency comparable to what the Soviets achieved with their first successful cascade, the plant might produce about [REDACTED] or alloy a year. An alternative assumption would be that the plant is or was intended to provide enriched uranium for reactor use, including tritium production.

The or alloy requirement for a single nuclear weapon, depending on design and the efficiency of implosion or compression, is [REDACTED]

It can thus be estimated that the potential

~~SECRET~~  
~~RESTRICTED DATA~~

~~SECRET  
RESTRICTED DATA~~

increment to the Chinese stockpile by operating a cascade of the apparent size of this plant is only in the range of [REDACTED] weapons a year, depending on the efficiency achieved. The existing plant area could also be used to take uranium halfway through the separation process to obtain a product enriched about 5%, perhaps [REDACTED] tons of it a year, a quantity that would have about double the total U-235 content of the or alloy that could be produced.

If it were not for the space difficulty, one similar building could eventually be added each year. This is the way US cascades have developed; the first one at Oak Ridge started with about one-tenth of its present electric power input.

The Lanchow plant, whatever its purpose, has not been completed or put into operation. As already suggested, a cascade puts a heavy burden on the machine-building industries. Possible explanations for the halt or delay of the work include the withdrawal of Soviet technical assistance, deliberately insufficient Soviet help at the beginning, recent industrial setbacks caused by the food crisis, increased priority of agriculture as opposed to heavy industry, delays caused by possible Chinese inability to manufacture the requisite machinery as yet, or a decision to concentrate on plutonium instead.

~~SECRET  
RESTRICTED DATA~~

~~SECRET~~  
~~RESTRICTED DATA~~

The Chinese, assuming they are producing plutonium, may be in no hurry to obtain oralloy. In this case, whether they add to a small pilot facility at Lanchow or build a new one does not matter much. In relation to the stockpile obtainable with plutonium alone, a handful of extra weapons due to oralloy production will not basically change the stockpile picture already presented. Oralloy will have a profound impact on the stockpile situation only when yearly production is sufficient to fabricate scores or hundreds of nuclear weapons, and this will require a much larger cascade than could be housed in or around the building photographed in Lanchow.

How large a cascade might the Chinese build, and with what weapons output? The first US and Soviet cascades utilized 200 to 250 MW of electric power. This is perhaps a useful scale to consider. If the Chinese experimented before building a plant, to improve and check their technology, they might be able to start a serious production program at a technical efficiency yielding [redacted] of electricity, economizing to about [redacted]. At [redacted] the result, for a production plant of 200 MW, would be about [redacted] or enough for [redacted]. The yearly addition to capacity, like the initial capacity, can be expressed in terms of the additional megawatts of electric power required, which

~~SECRET~~  
~~RESTRICTED DATA~~

~~SECRET  
RESTRICTED DATA~~

A handful of extra tests would probably be undertaken, reducing the stockpile increment correspondingly.

Other variants could be postulated, but slightly faster schedules would not accelerate stockpile growth much until after 1970.

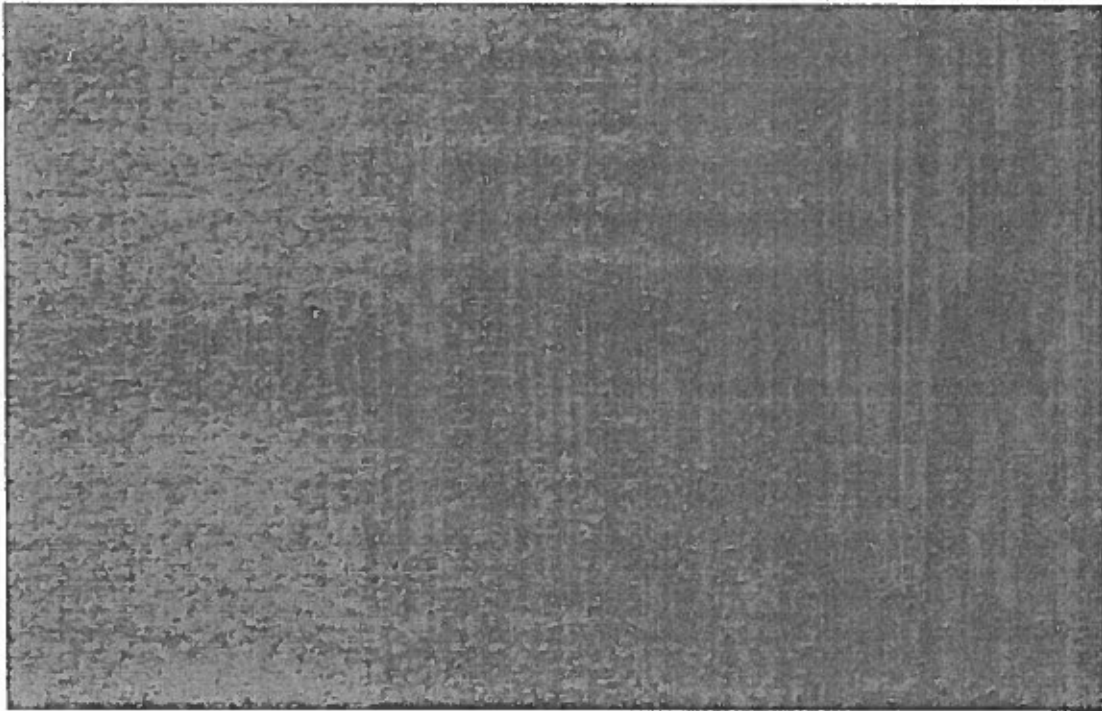
The results of combining this oralloy schedule with the three plutonium production schedules already shown are summarized below in Table III-4. The extremely slow all-plutonium variant is omitted because there seems to be little reason for the Chinese to build two plutonium reactors in the first half of the 1960s, amidst an economic crisis, and then not expand production in some way later. The two slower plutonium schedules shown earlier are combined below, not with the oralloy schedule shown in Table III-3, but with the same schedule lagged one year. Thus only in the first variant does the oralloy production schedule have a substantial effect on the outcome. The last four variants are all moderated in one way or another, to show the range within which the program might be slowed down compared to the first variant. Attention is

~~SECRET  
RESTRICTED DATA~~

~~SECRET~~  
~~RESTRICTED DATA~~

again drawn to the possibility that stockpile acquisition would take place at one or another rate, but that the entire schedule would be shifted back one or more years by technical and economic difficulties.

TABLE III-4



(Table III-5 is appended to show in more detail the derivation of III-4.)



~~SECRET~~  
~~RESTRICTED DATA~~

~~SECRET~~  
~~RESTRICTED DATA~~

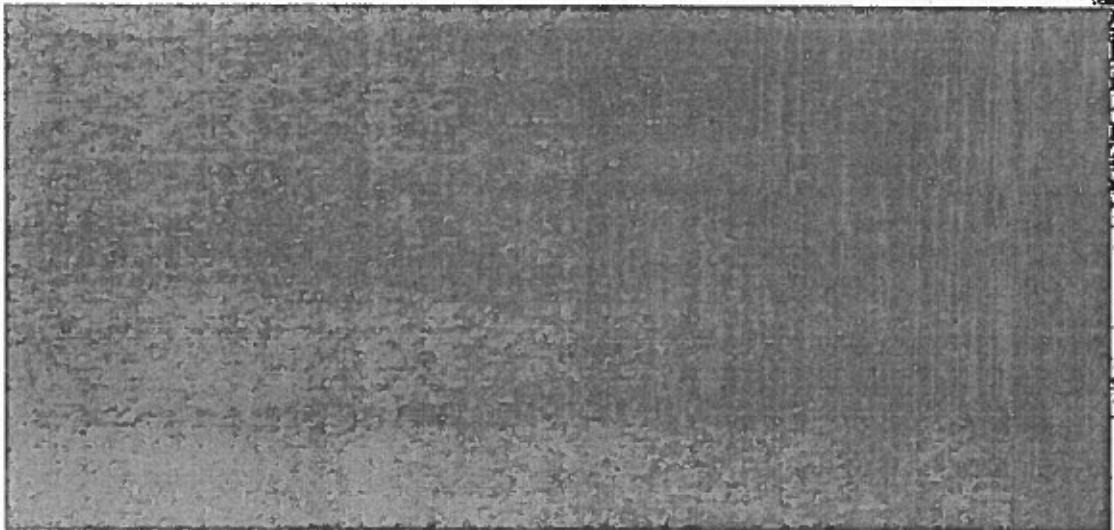
[REDACTED]

On the basis of such calculations it appears unlikely that China, relying on its own resources alone, could accumulate a stockpile of as many as one hundred weapons without the world's obtaining four or five years' notice that the program is achieving successes.

TABLE III-5

TOTAL STOCKPILE

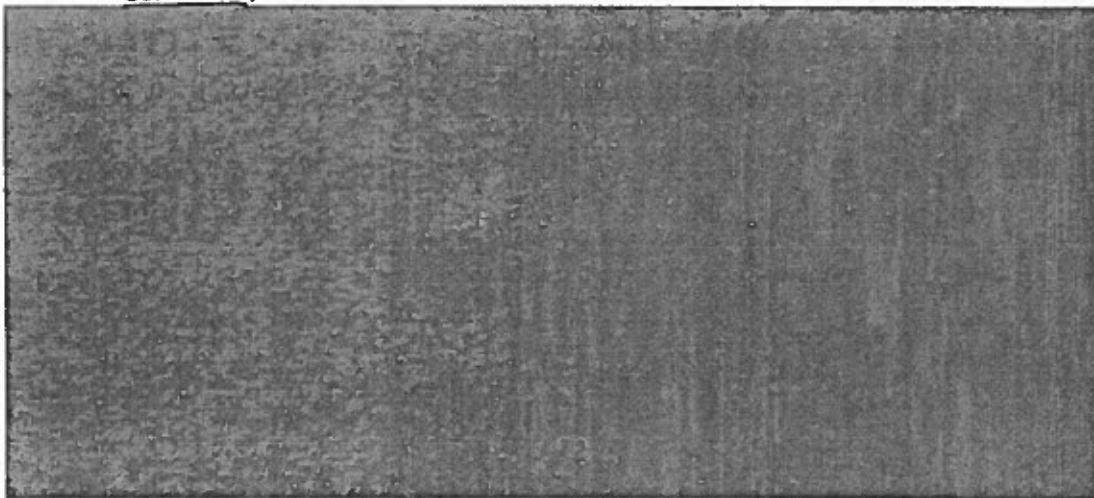
- A. Results of Combining "Moderately Fast" Plutonium Production from Table III-1 with Oralloy Schedule Above. (Result summarized in Table III-3, Column A)



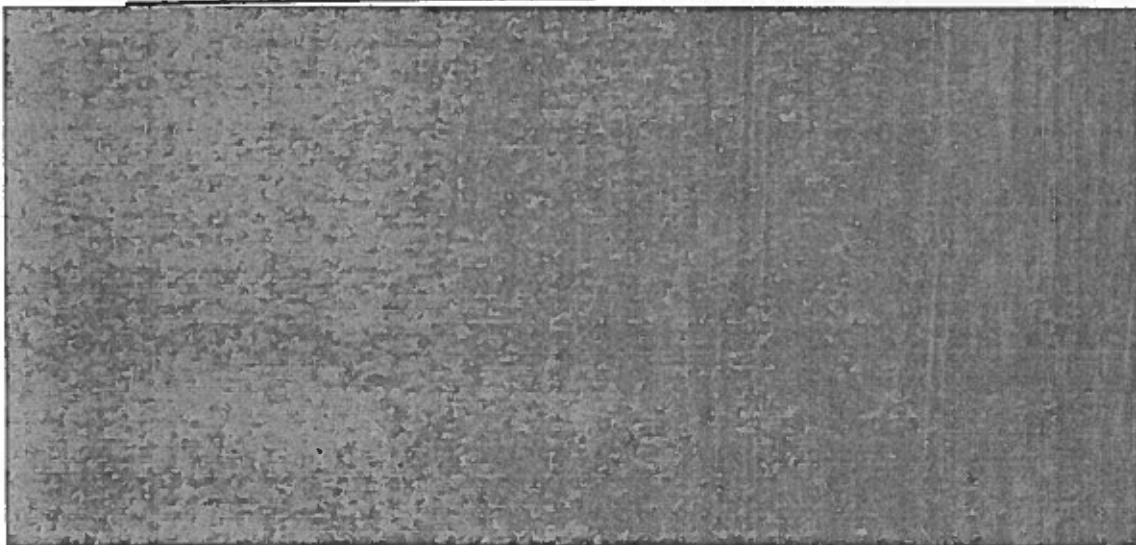
~~SECRET~~  
~~RESTRICTED DATA~~

~~SECRET~~  
~~RESTRICTED DATA~~

- B. Results of Lagging Oralloid Production Shown in Table III-3 by One Year and Combining with "Moderately Slow" Plutonium Schedule from Table III-2. (Result summarized in Table III-4, Column C)



- C. "Extremely Slow" Schedule from Table III-2 Plus Lagged Oralloid Schedule. (Result summarized in Table III-4, Column E)

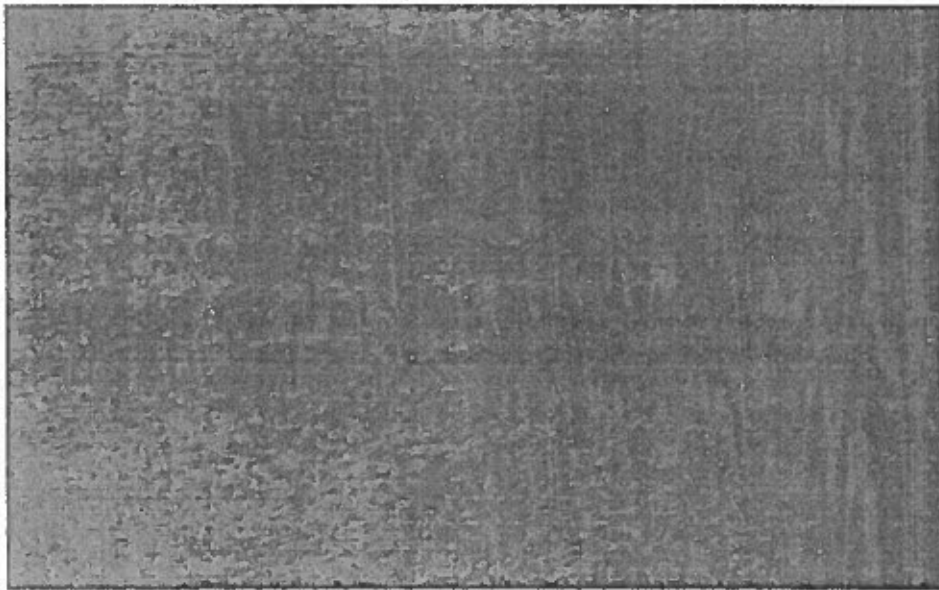


~~SECRET~~  
~~RESTRICTED DATA~~

~~SECRET~~  
~~RESTRICTED DATA~~

SUMMARY

The following key points can be postulated on the chart of Chinese nuclear progress. The dates are only approximations. There could be systematic delays, of one or more years in all dates, due to Chinese economic or technical difficulties.

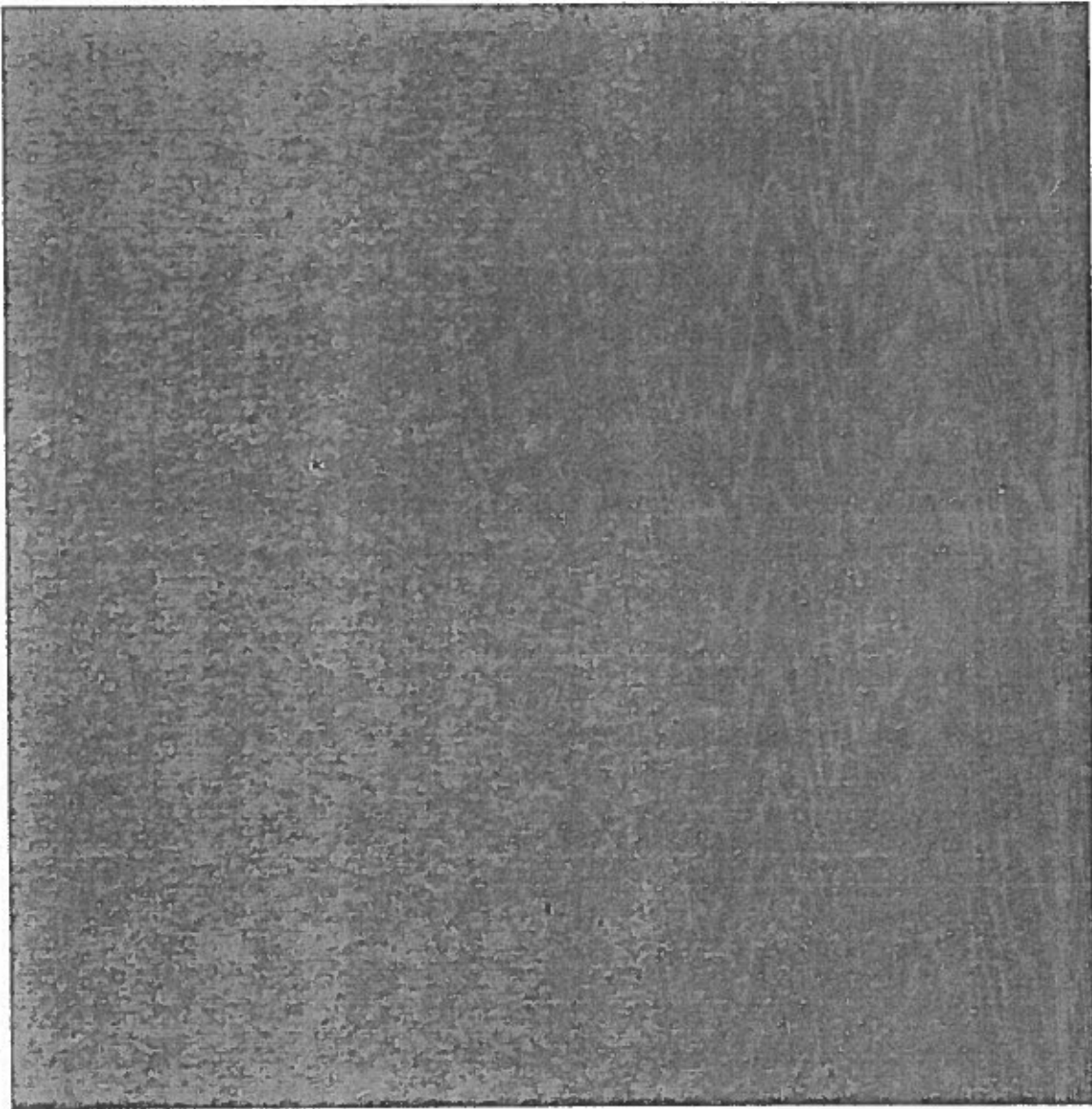


Any degree of slowing down or "stretching out" of the program is technically possible.

~~SECRET~~  
~~RESTRICTED DATA~~

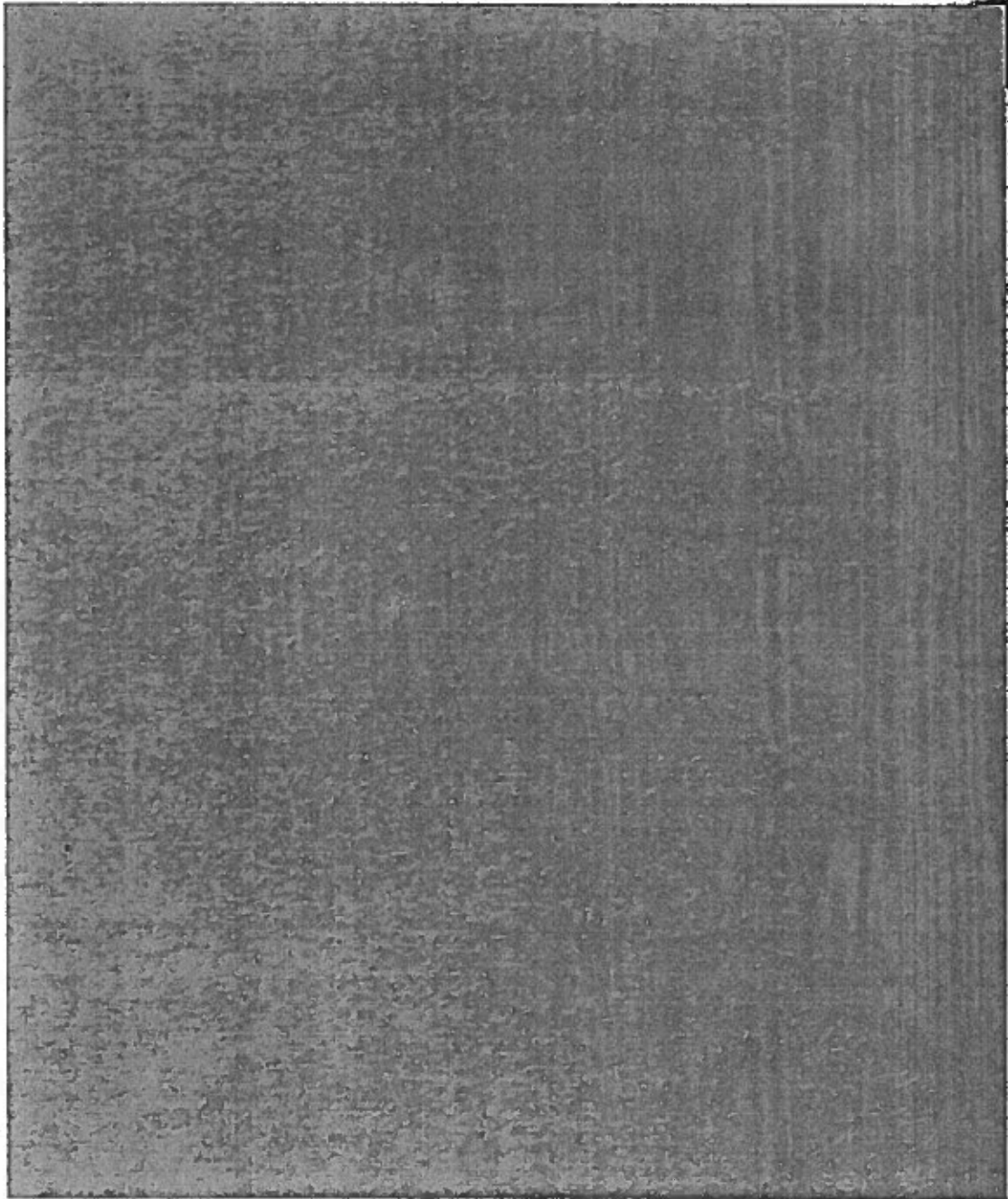


~~SECRET  
RESTRICTED DATA~~



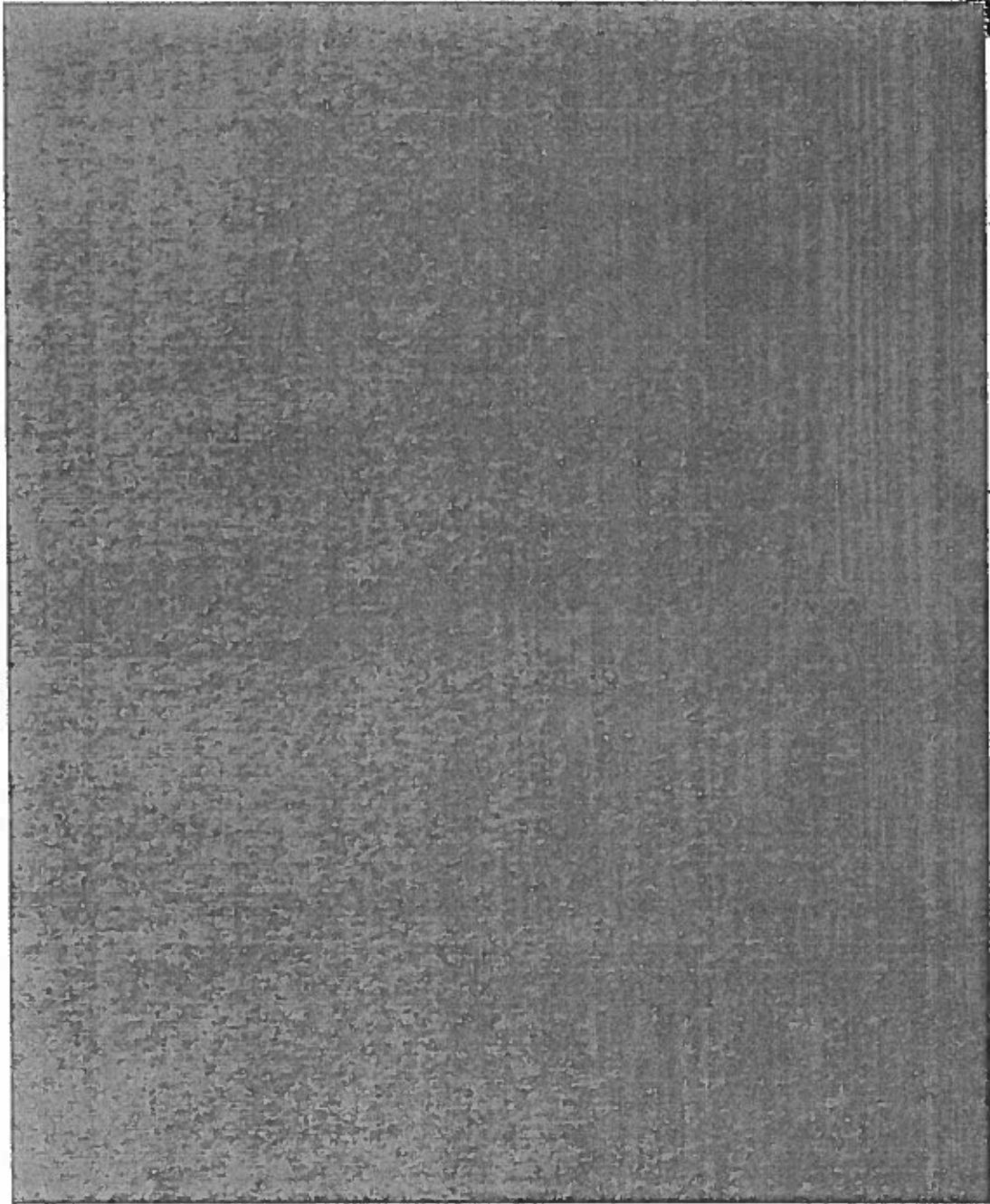
~~SECRET  
RESTRICTED DATA~~

~~SECRET~~  
~~RESTRICTED DATA~~



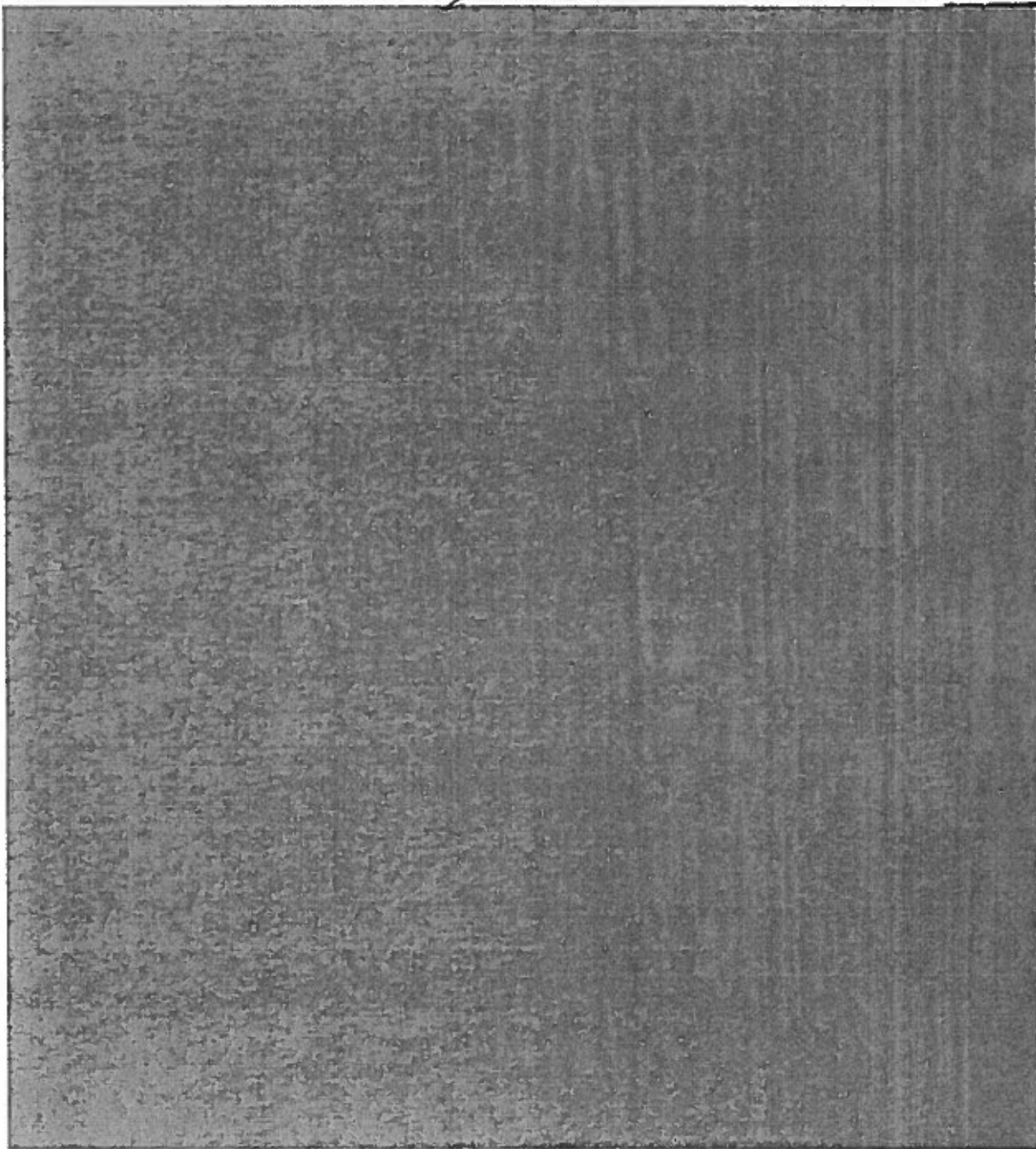
~~SECRET~~  
~~RESTRICTED DATA~~

~~SECRET~~  
RESTRICTED DATA



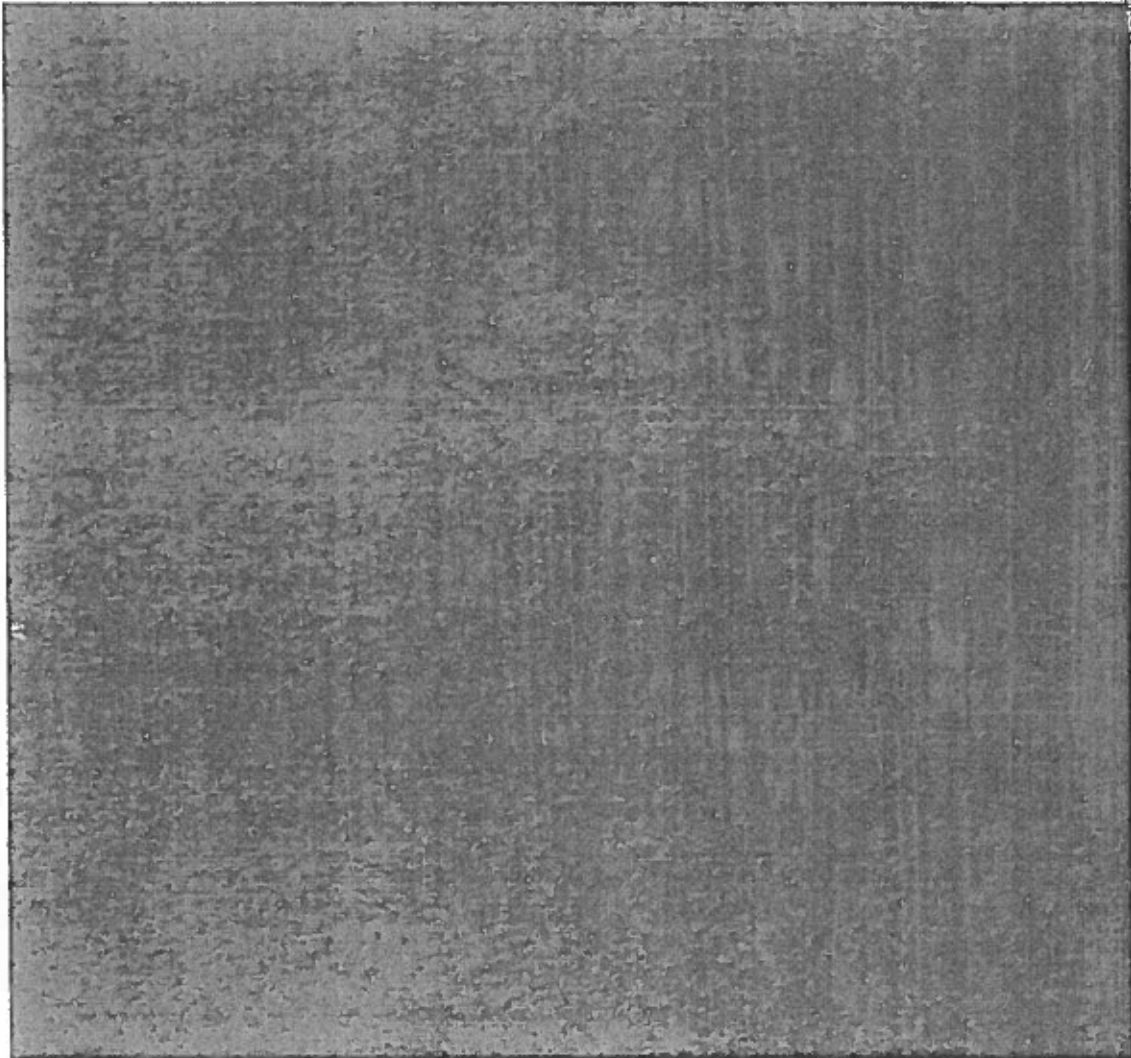
~~SECRET~~  
RESTRICTED DATA

~~SECRET~~  
~~RESTRICTED DATA~~



~~SECRET~~  
~~RESTRICTED DATA~~

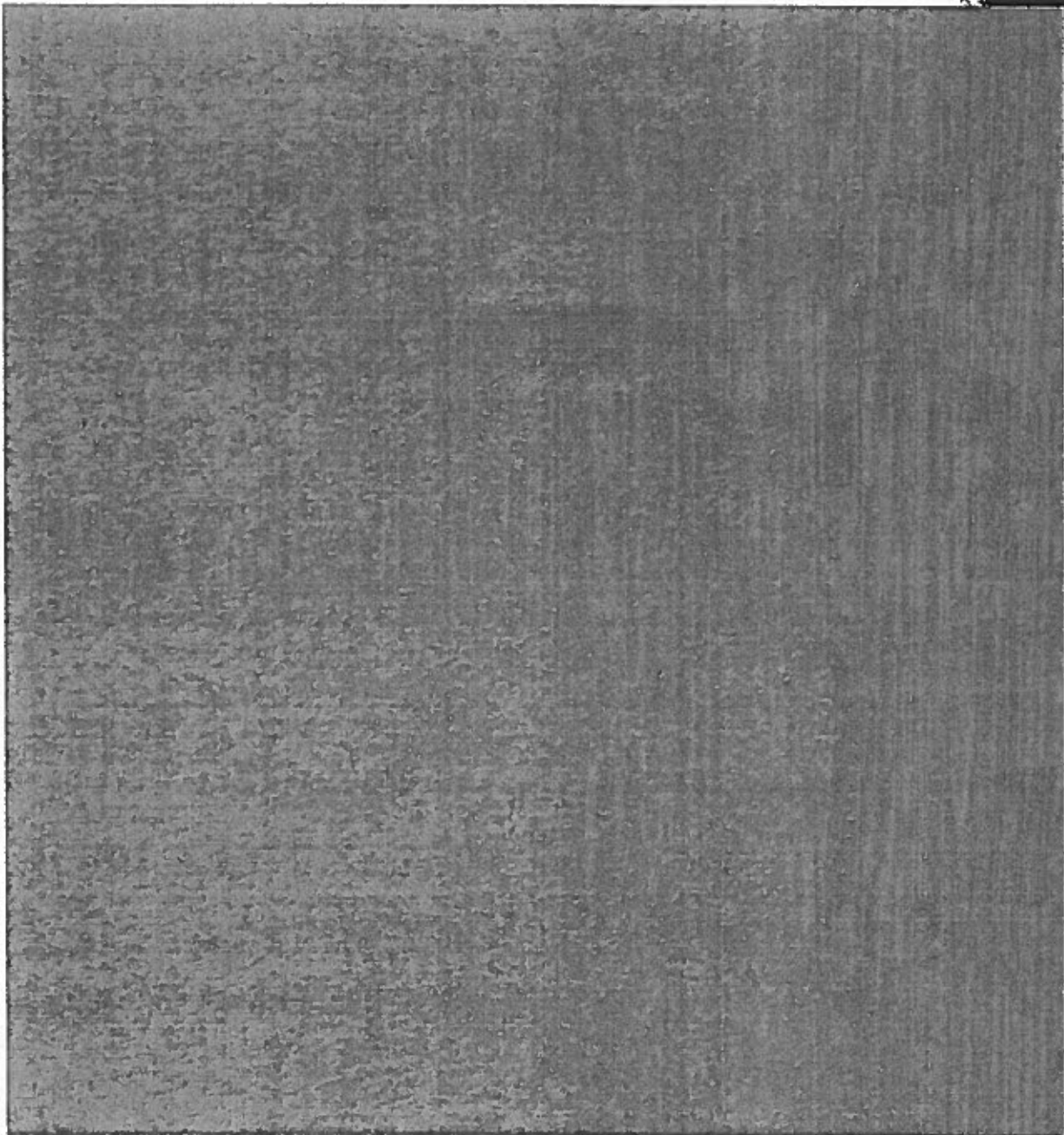
~~SECRET~~  
~~RESTRICTED DATA~~



68

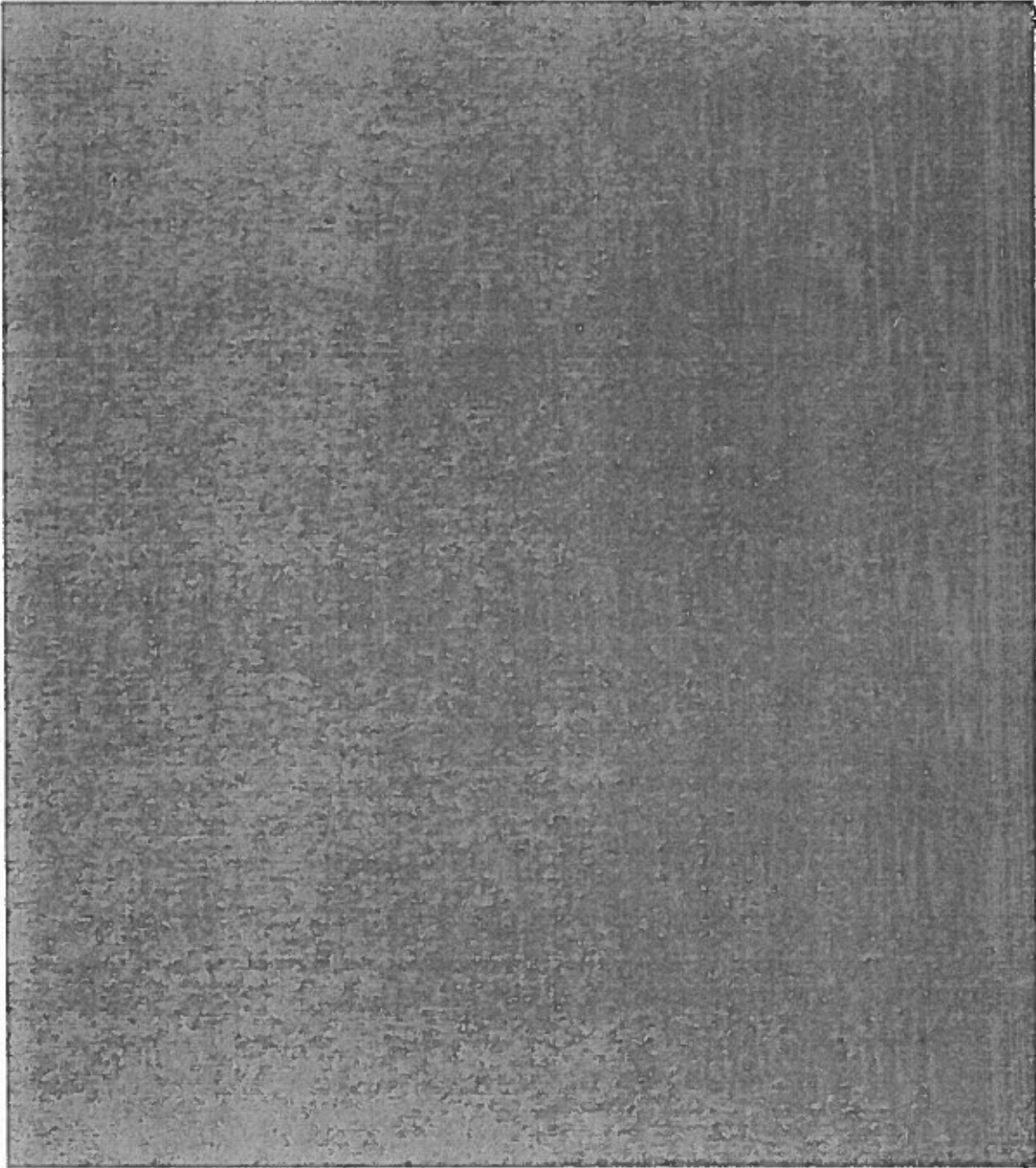
~~SECRET~~  
~~RESTRICTED DATA~~

~~SECRET~~  
~~RESTRICTED DATA~~



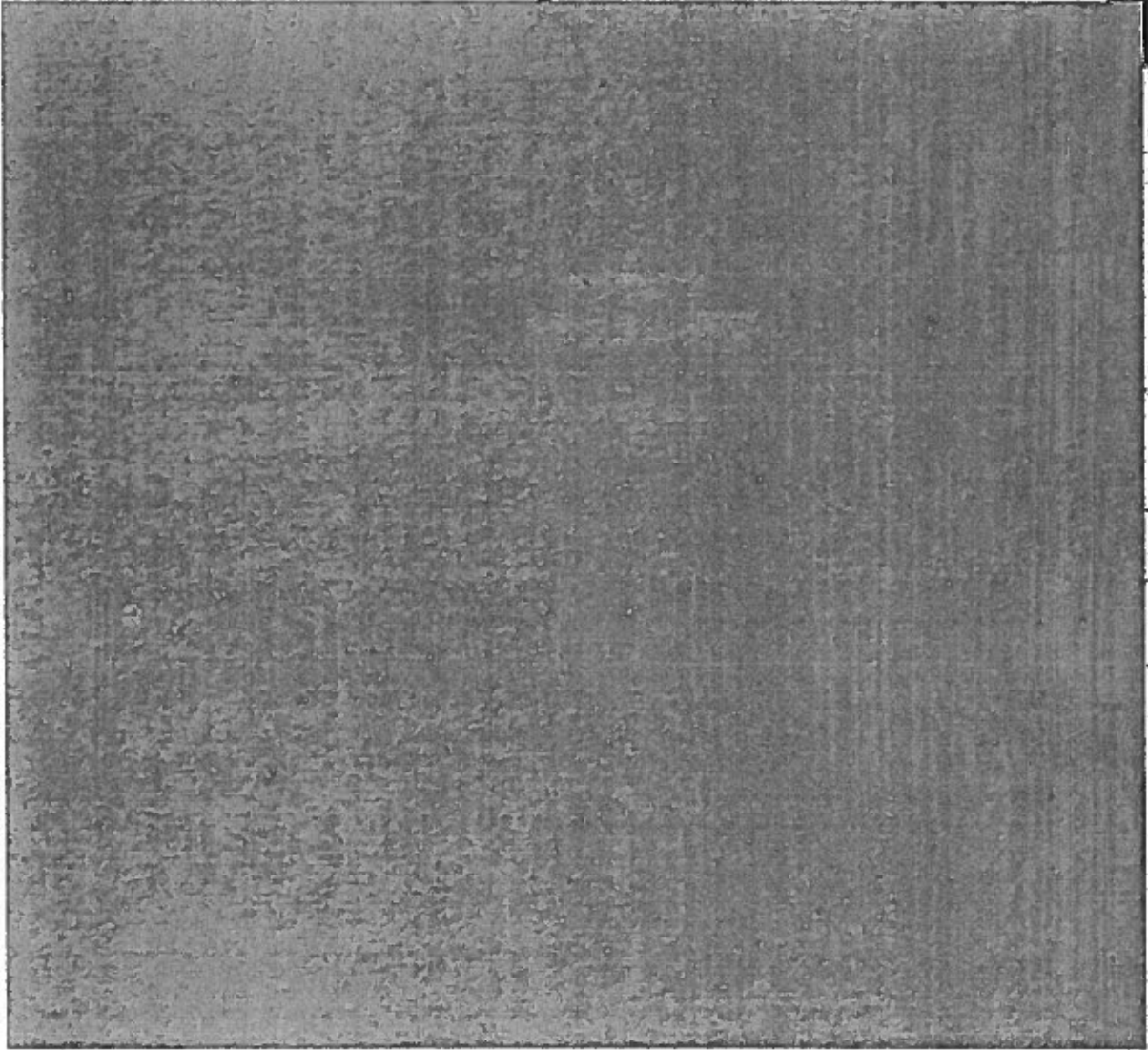
~~SECRET~~  
~~RESTRICTED DATA~~

~~SECRET  
RESTRICTED DATA~~



~~SECRET  
RESTRICTED DATA~~

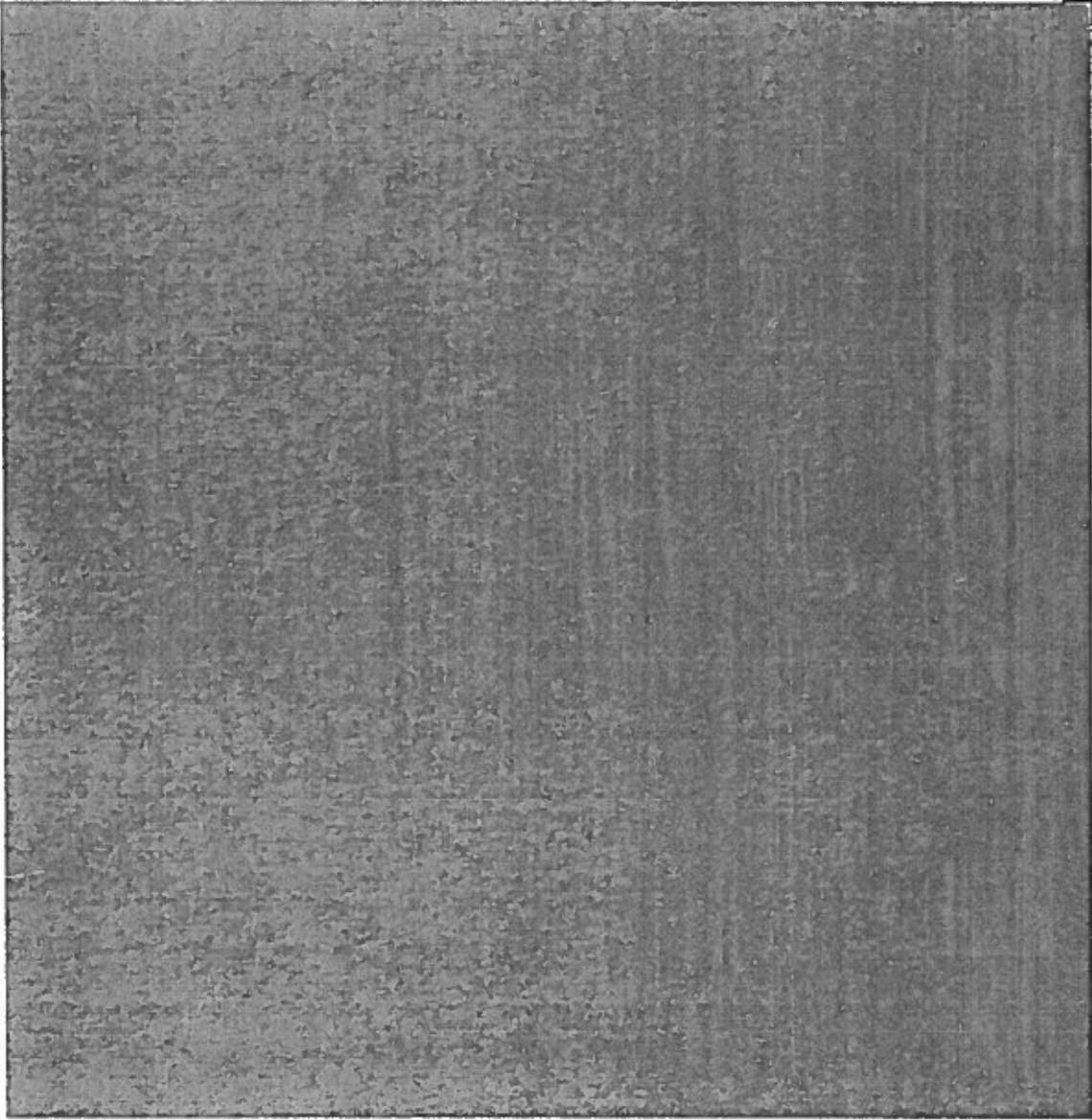
~~SECRET~~  
~~RESTRICTED DATA~~



~~SECRET~~  
~~RESTRICTED DATA~~

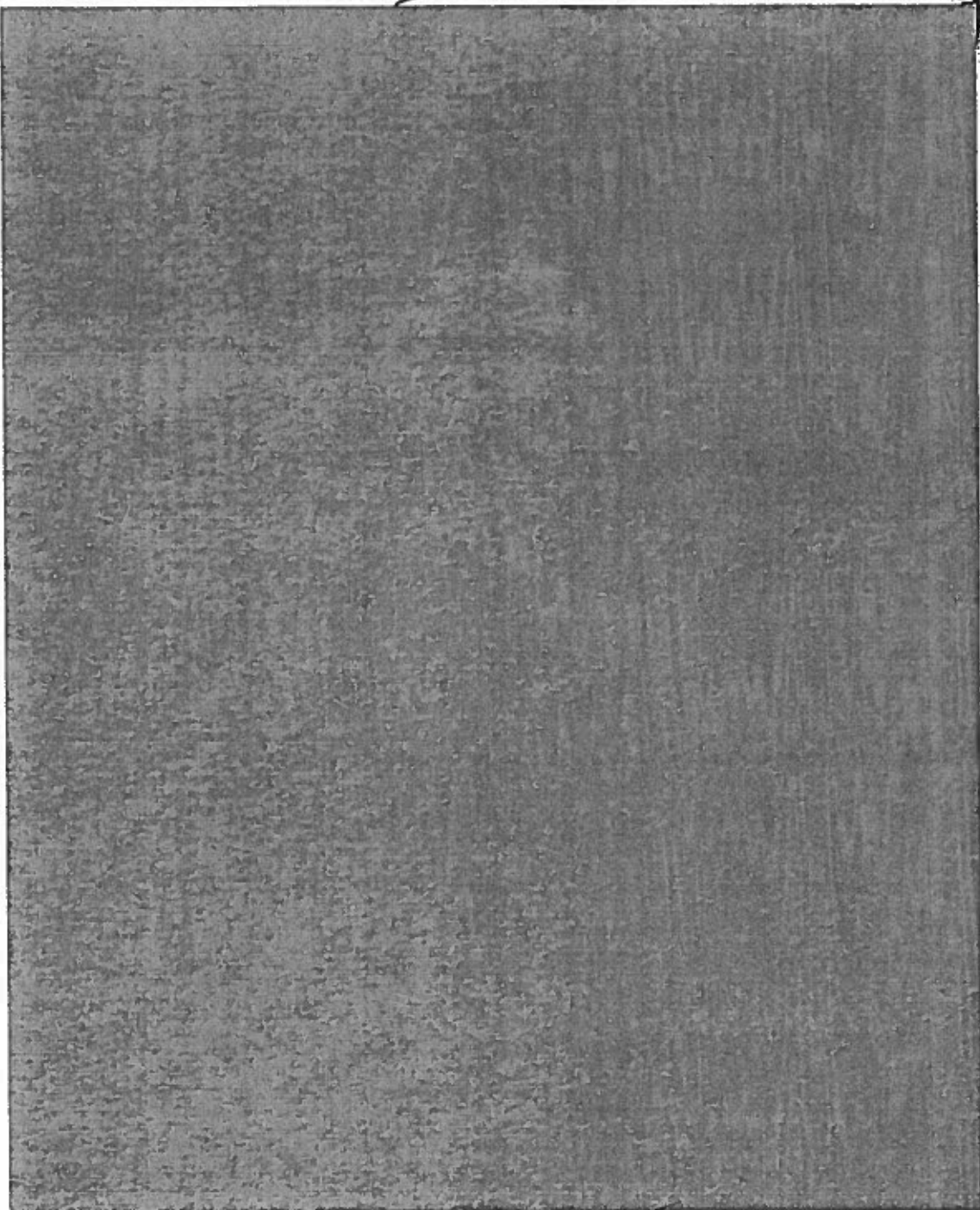


~~SECRET~~  
~~RESTRICTED DATA~~



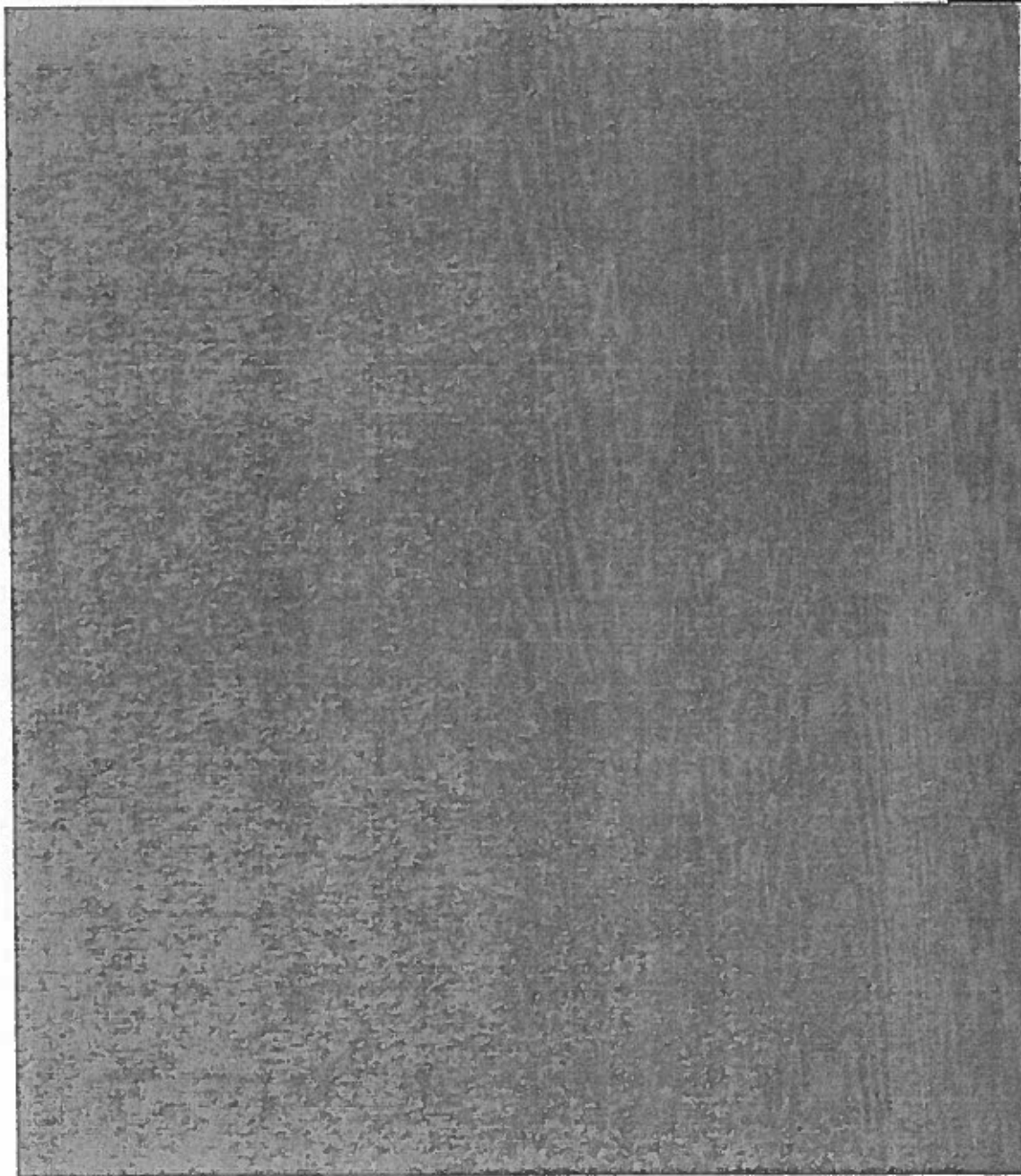
~~SECRET~~  
~~RESTRICTED DATA~~

~~SECRET~~  
~~RESTRICTED DATA~~



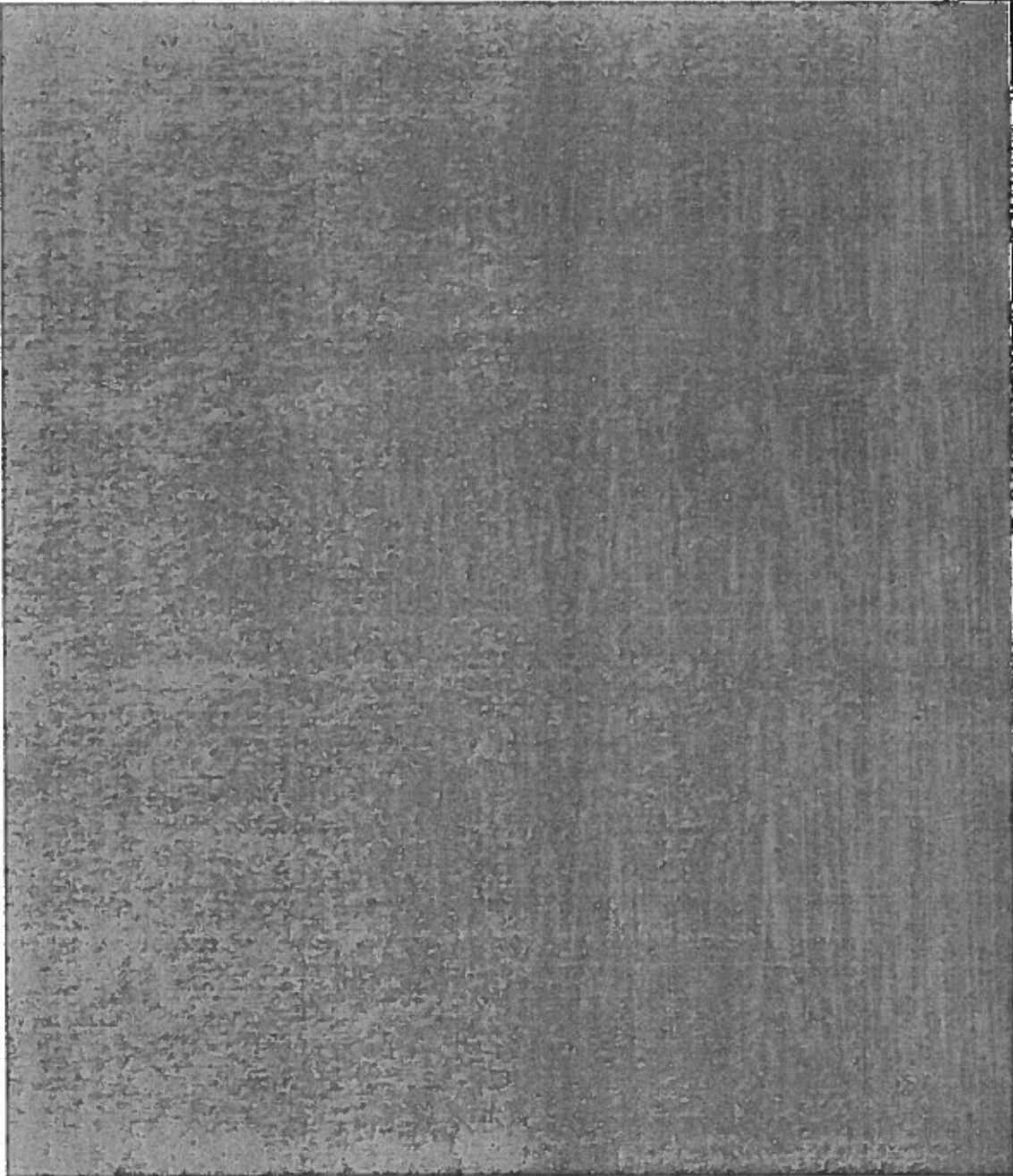
<sup>73</sup>  
~~SECRET~~  
~~RESTRICTED DATA~~

~~SECRET~~  
~~RESTRICTED DATA~~



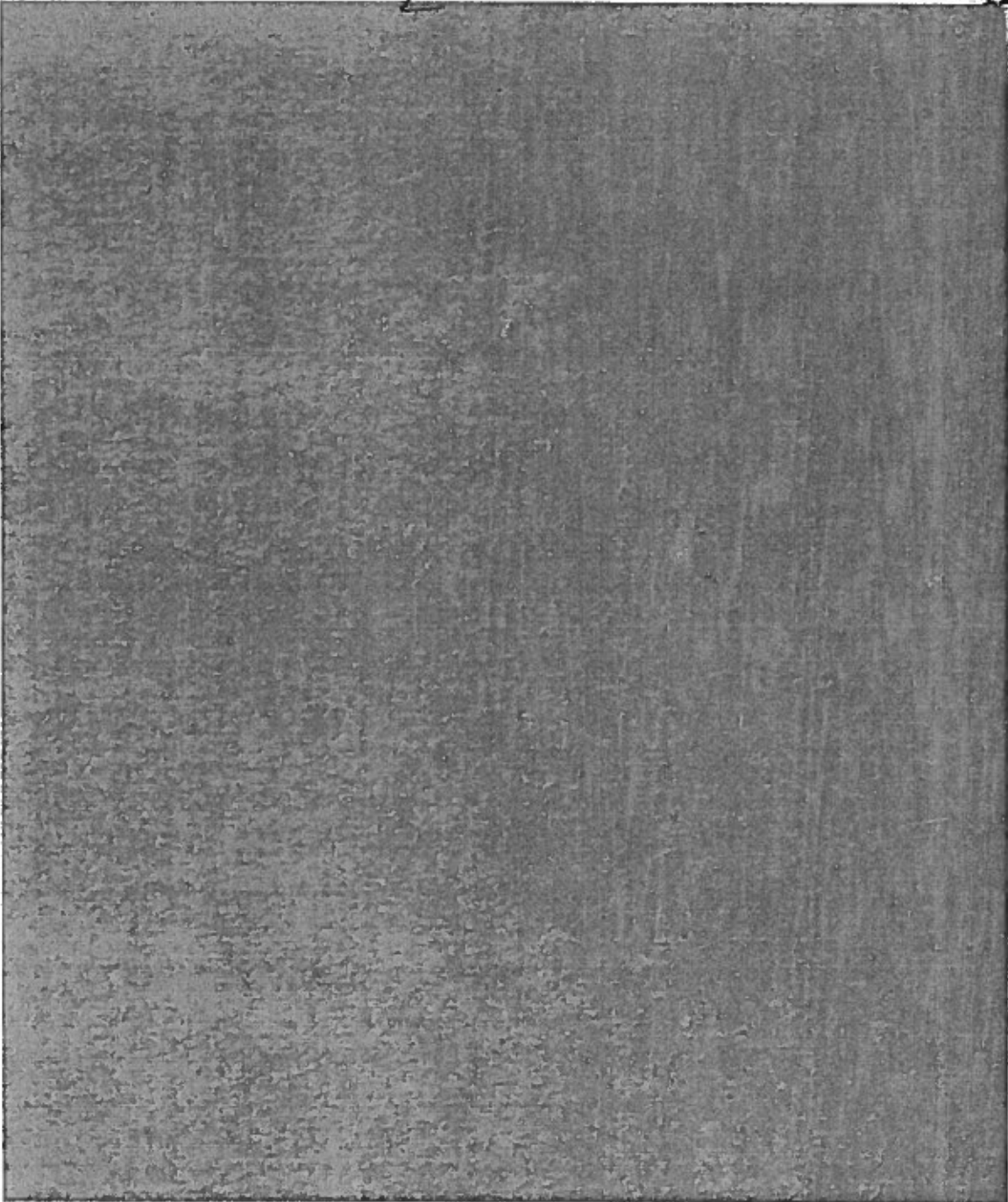
~~SECRET~~  
~~RESTRICTED DATA~~

~~SECRET~~  
~~RESTRICTED DATA~~



~~SECRET~~  
~~RESTRICTED DATA~~

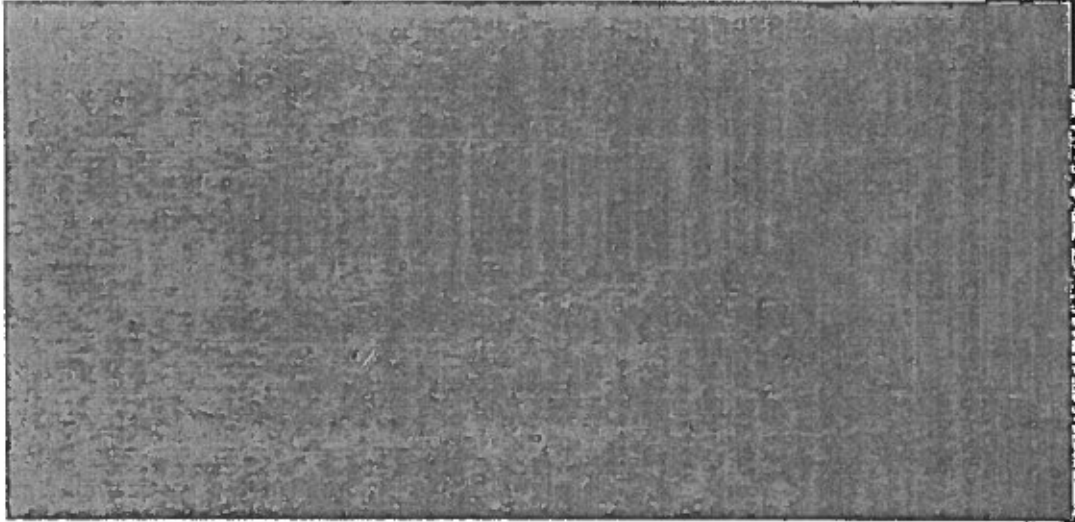
~~SECRET~~  
~~RESTRICTED DATA~~



76

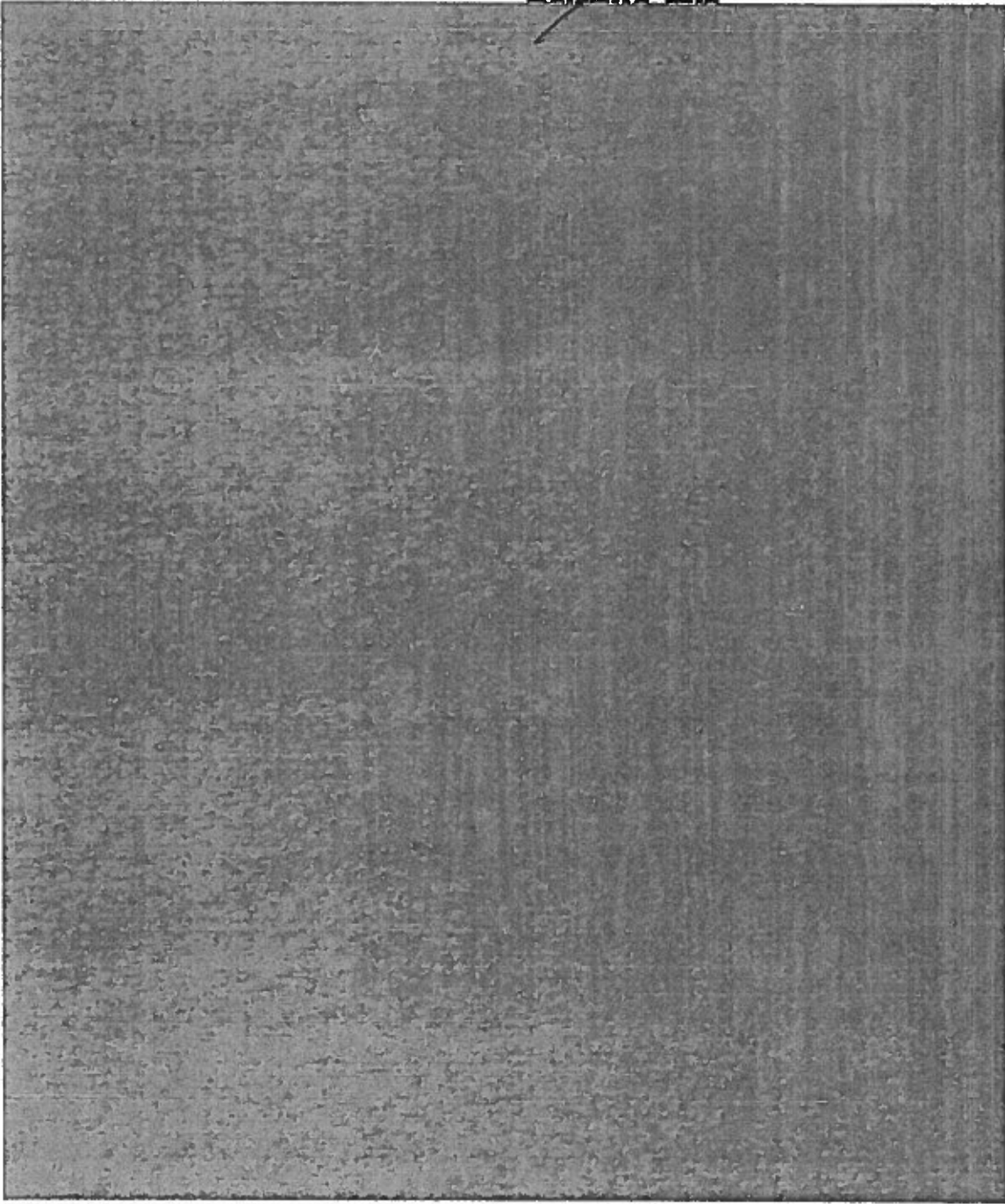
~~SECRET~~  
~~RESTRICTED DATA~~

~~SECRET  
RESTRICTED DATA~~



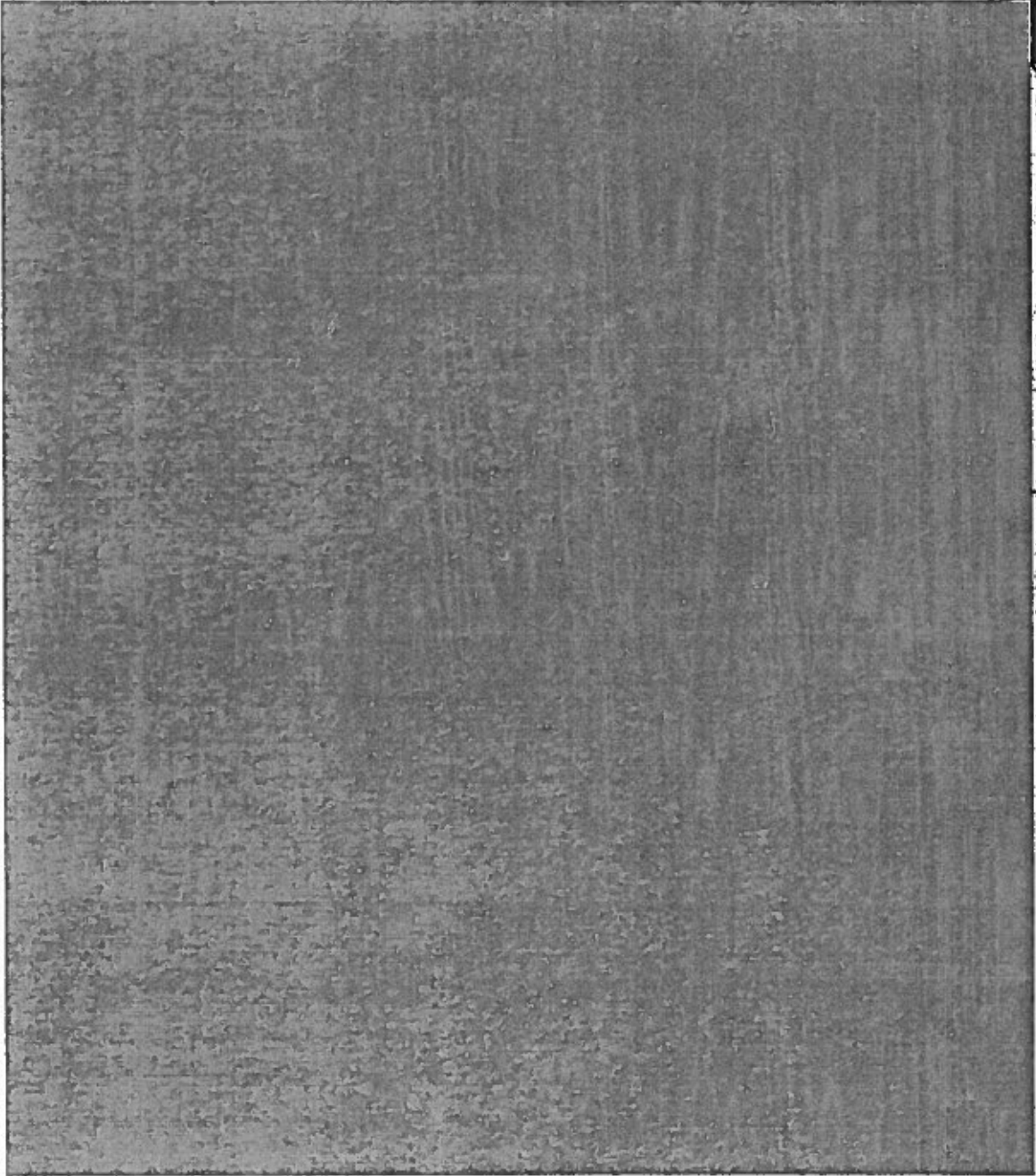
~~SECRET  
RESTRICTED DATA~~

~~SECRET~~  
~~RESTRICTED DATA~~



~~SECRET~~  
~~RESTRICTED DATA~~

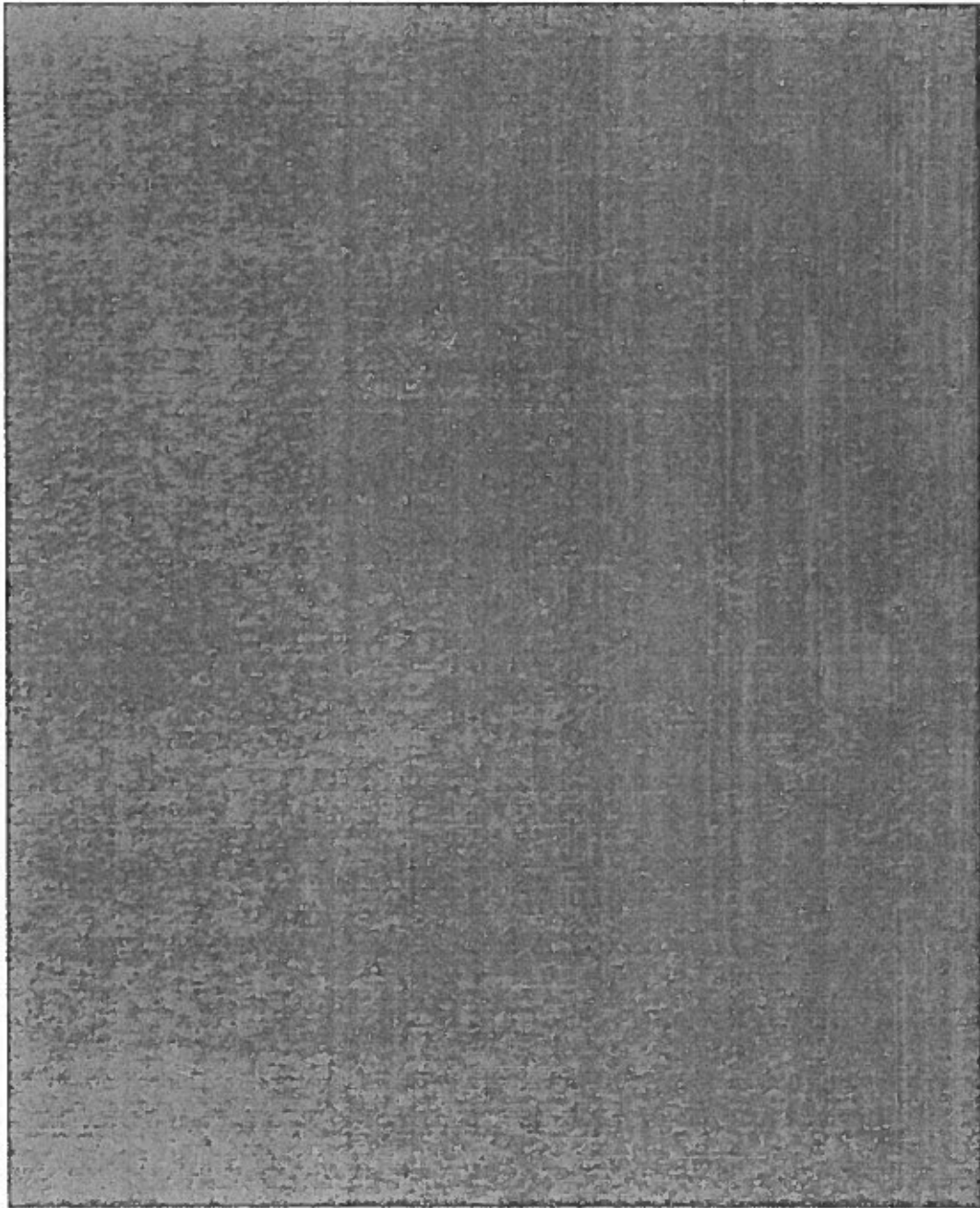
~~SECRET~~  
~~RESTRICTED DATA~~



~~SECRET~~  
~~RESTRICTED DATA~~



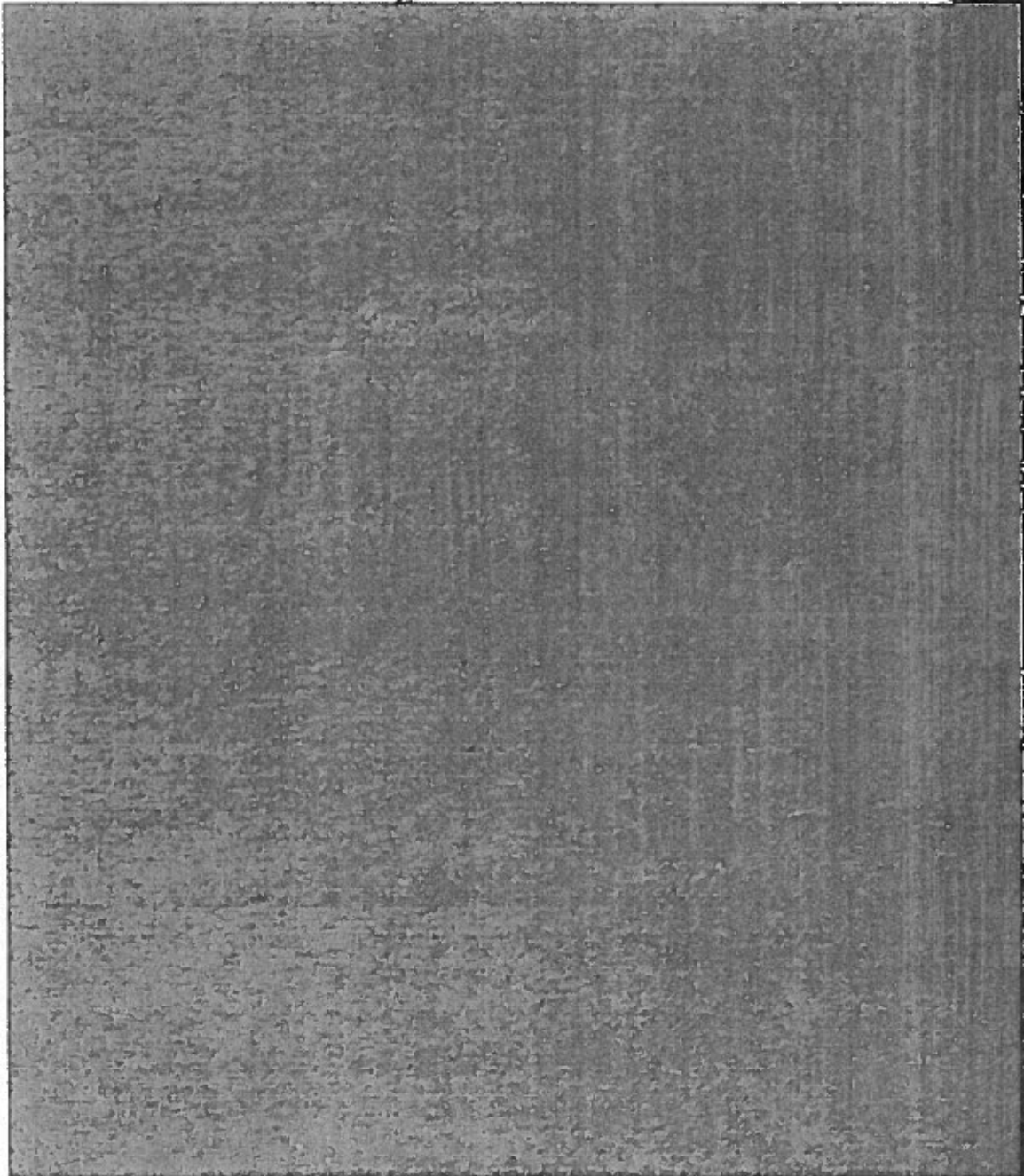
~~SECRET~~  
~~RESTRICTED DATA~~



80

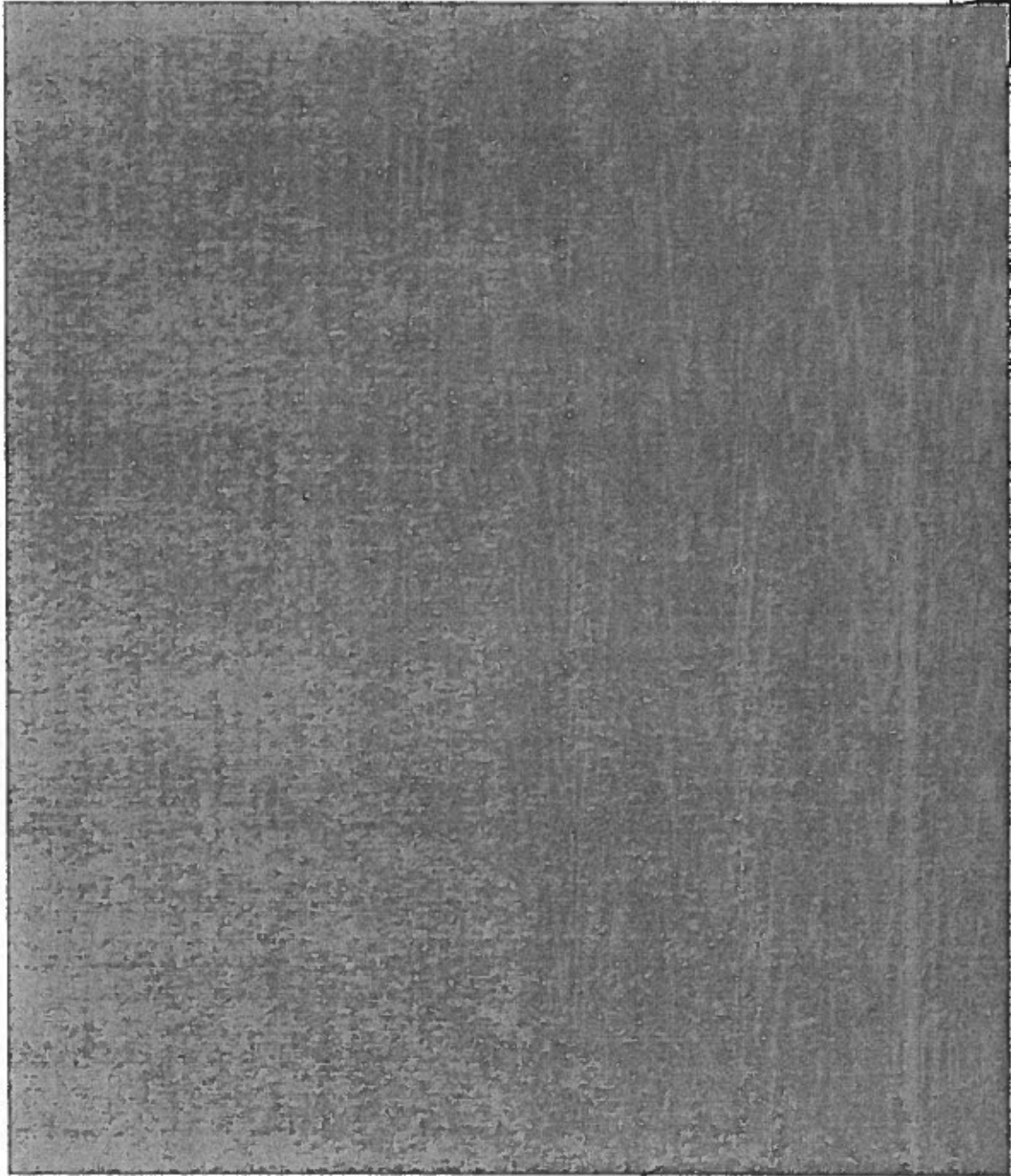
~~SECRET~~  
~~RESTRICTED DATA~~

~~SECRET  
RESTRICTED DATA~~



~~SECRET  
RESTRICTED DATA~~

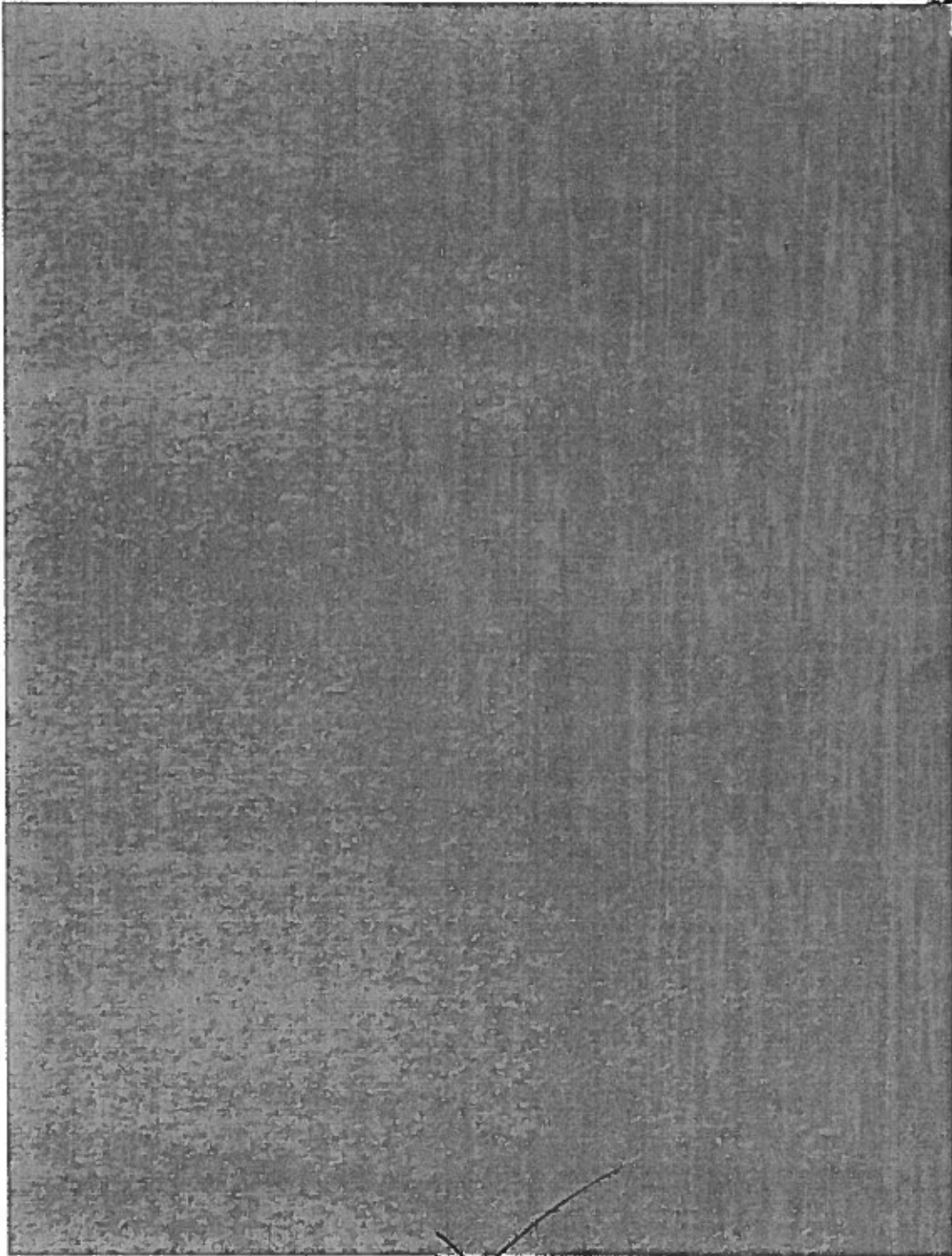
~~SECRET~~  
~~RESTRICTED DATA~~



82

~~SECRET~~  
~~RESTRICTED DATA~~

~~SECRET~~  
~~RESTRICTED DATA~~

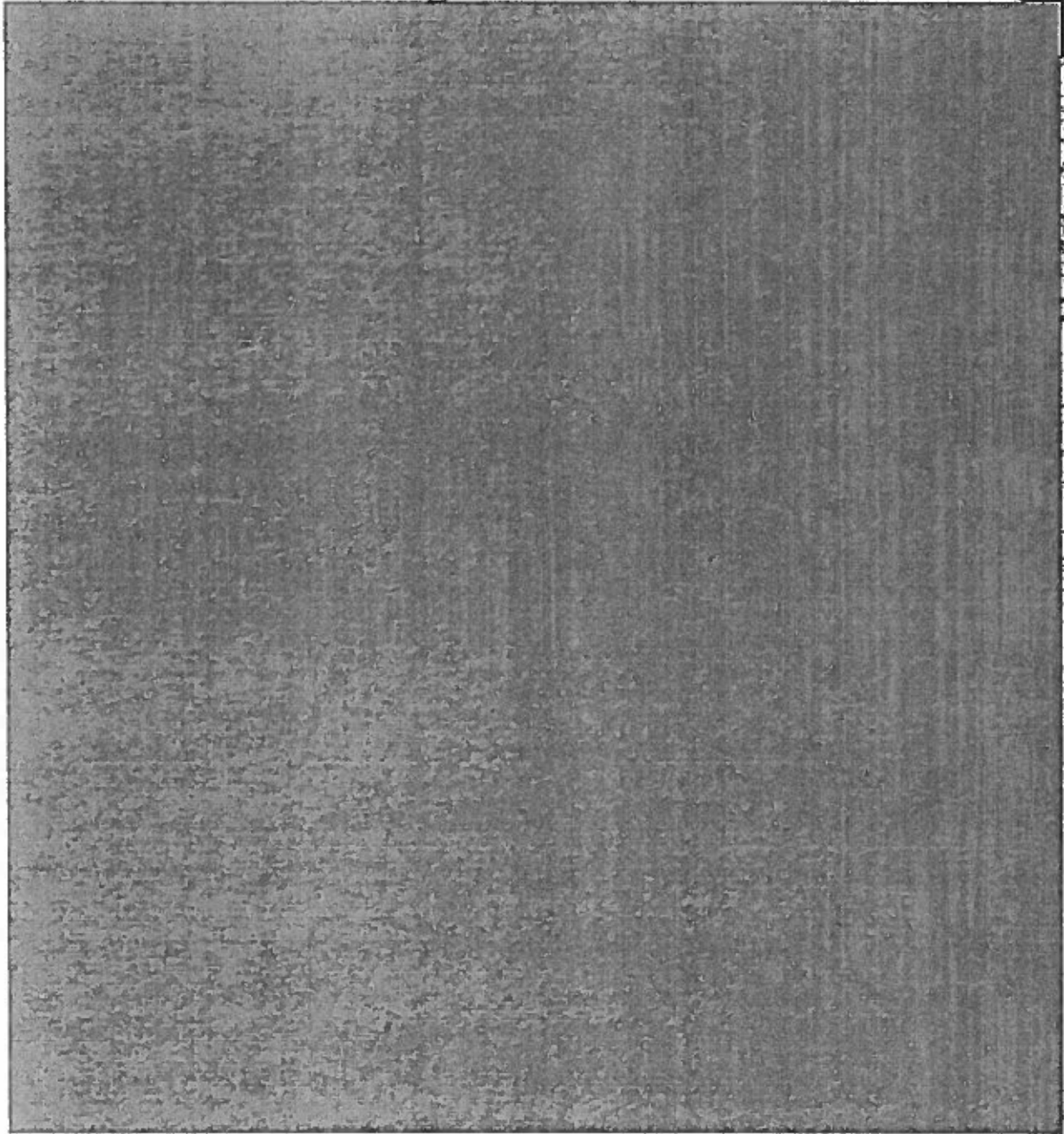


~~SECRET~~  
~~RESTRICTED DATA~~

4-10-68

4-10-68

~~SECRET  
RESTRICTED DATA~~



~~SECRET  
RESTRICTED DATA~~

~~SECRET  
RESTRICTED DATA~~

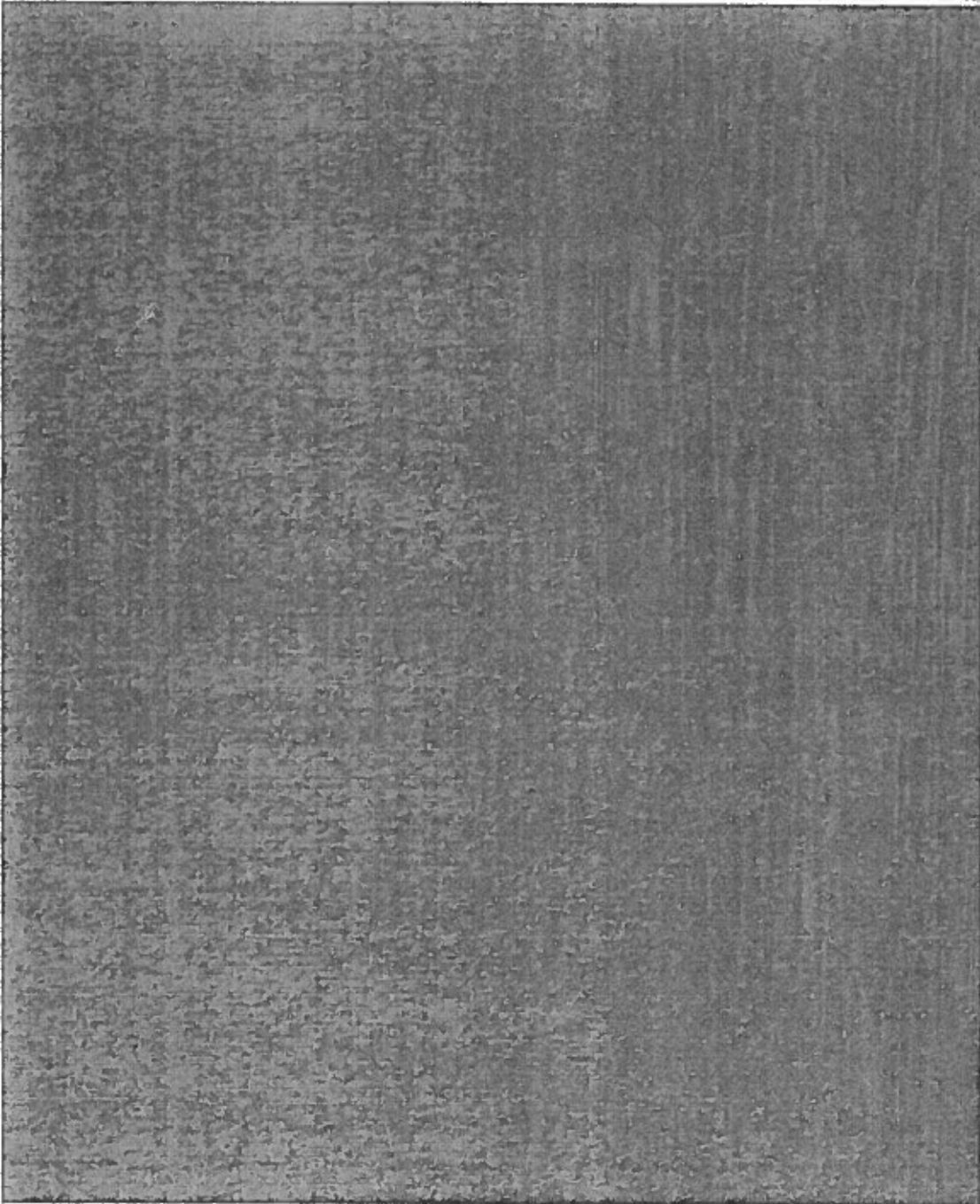
Impending production of an improved type of submarine was reported in 1960, but did not materialize after the withdrawal of Soviet technical personnel.

No Chinese work with naval missiles of any kind has been reported. The possibility exists, but is relatively slight, that the Soviets would furnish either cruise missiles or the design specifications for cruise missiles that can be launched from modified present submarines. Chinese independent development of a submarine-launched cruise or ballistic missile could scarcely be achieved before the 1970s, and the cost in scarce resources would adversely affect other advanced weapons programs.

As can be seen by their 1,300-ton displacement, the W-class vessels now built in Communist China are not large submarines. By way of comparison, US nuclear submarines are between 2,300 and 7,000 tons displacement, while those carrying Polaris are in the 5,400 to 7,000-ton range. With shipyards and construction experience already acquired, however, the Chinese should be able to build larger vessels on their own within perhaps three or four years. Submarines can be very expensive, because of their modern equipment and materials requirements. In the United States, conventional submarines cost at least \$8,000 per standard displacement ton--about \$13,000, if designed to carry missiles.

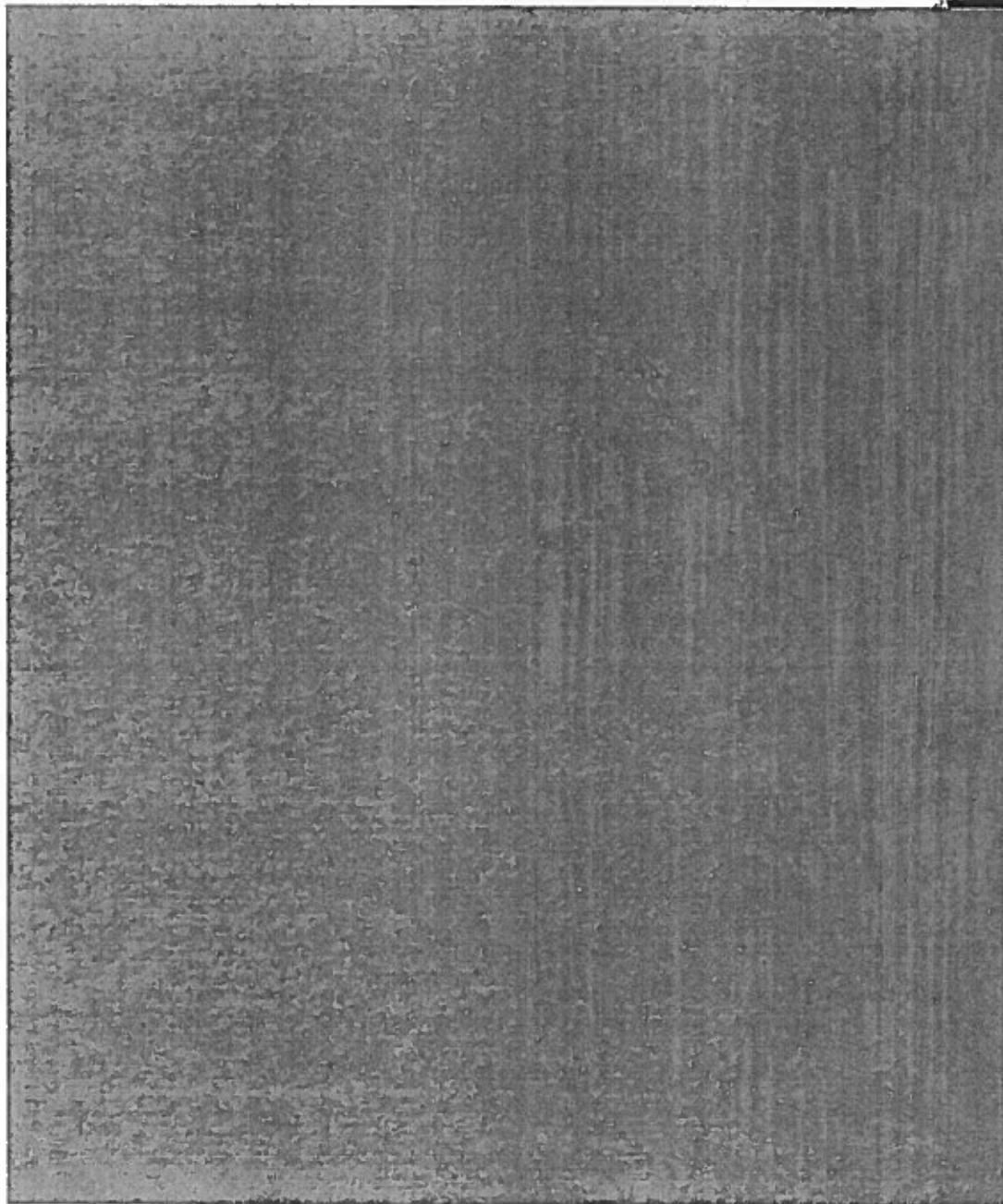
~~SECRET  
RESTRICTED DATA~~

~~SECRET~~  
~~RESTRICTED DATA~~



~~SECRET~~  
~~RESTRICTED DATA~~

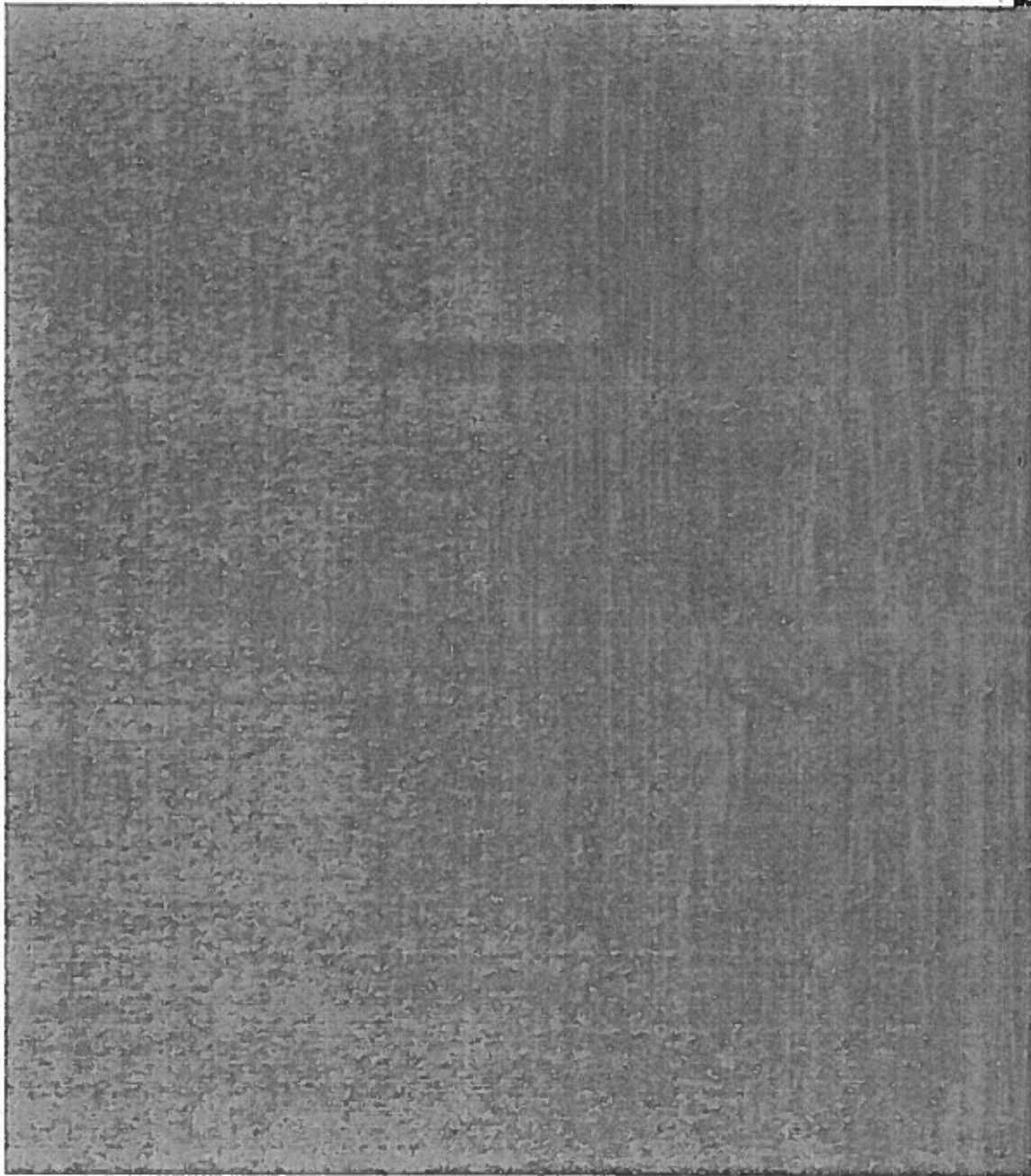
~~SECRET~~  
~~RESTRICTED DATA~~



~~SECRET~~  
~~RESTRICTED DATA~~

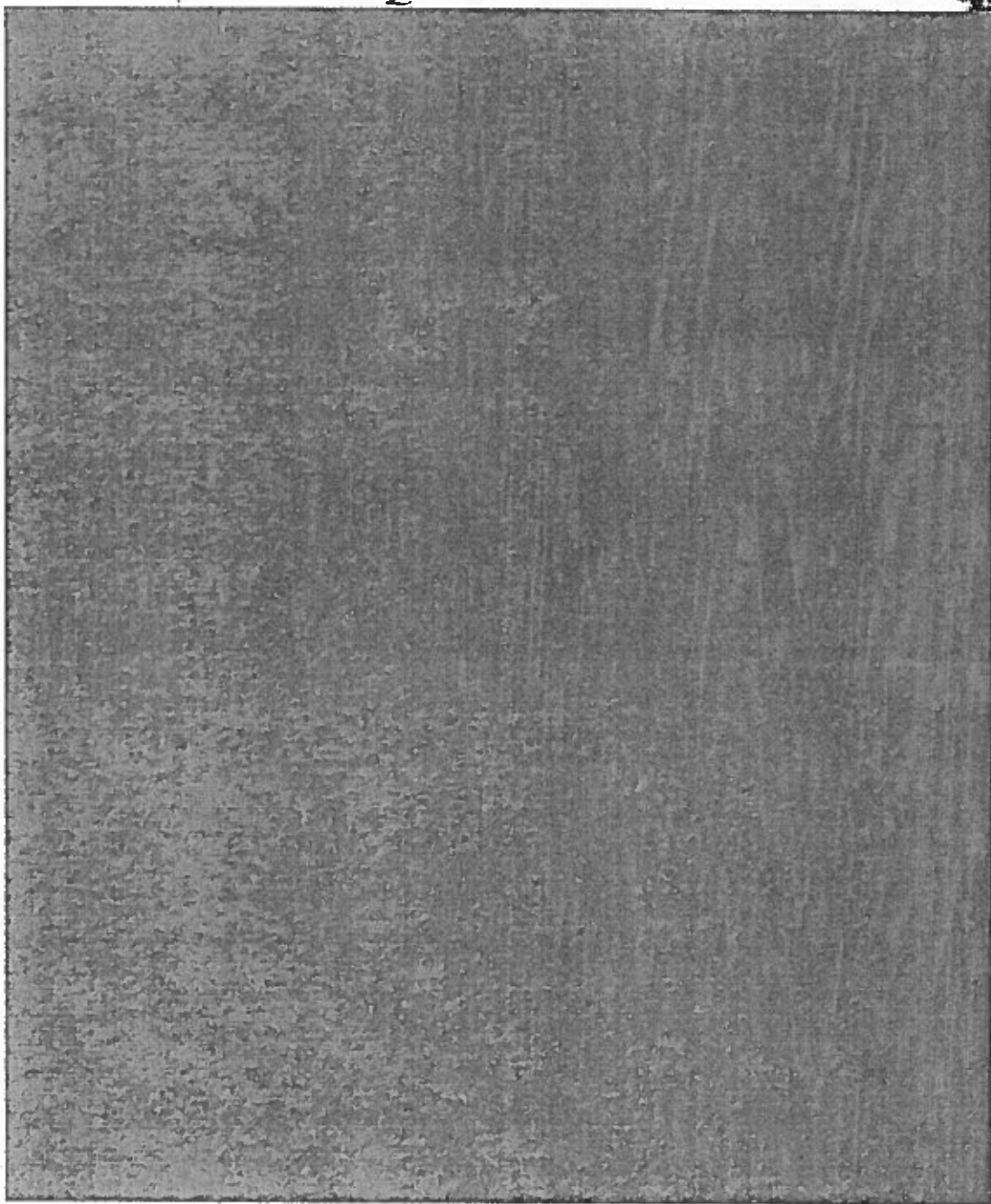


~~SECRET~~  
RESTRICTED DATA



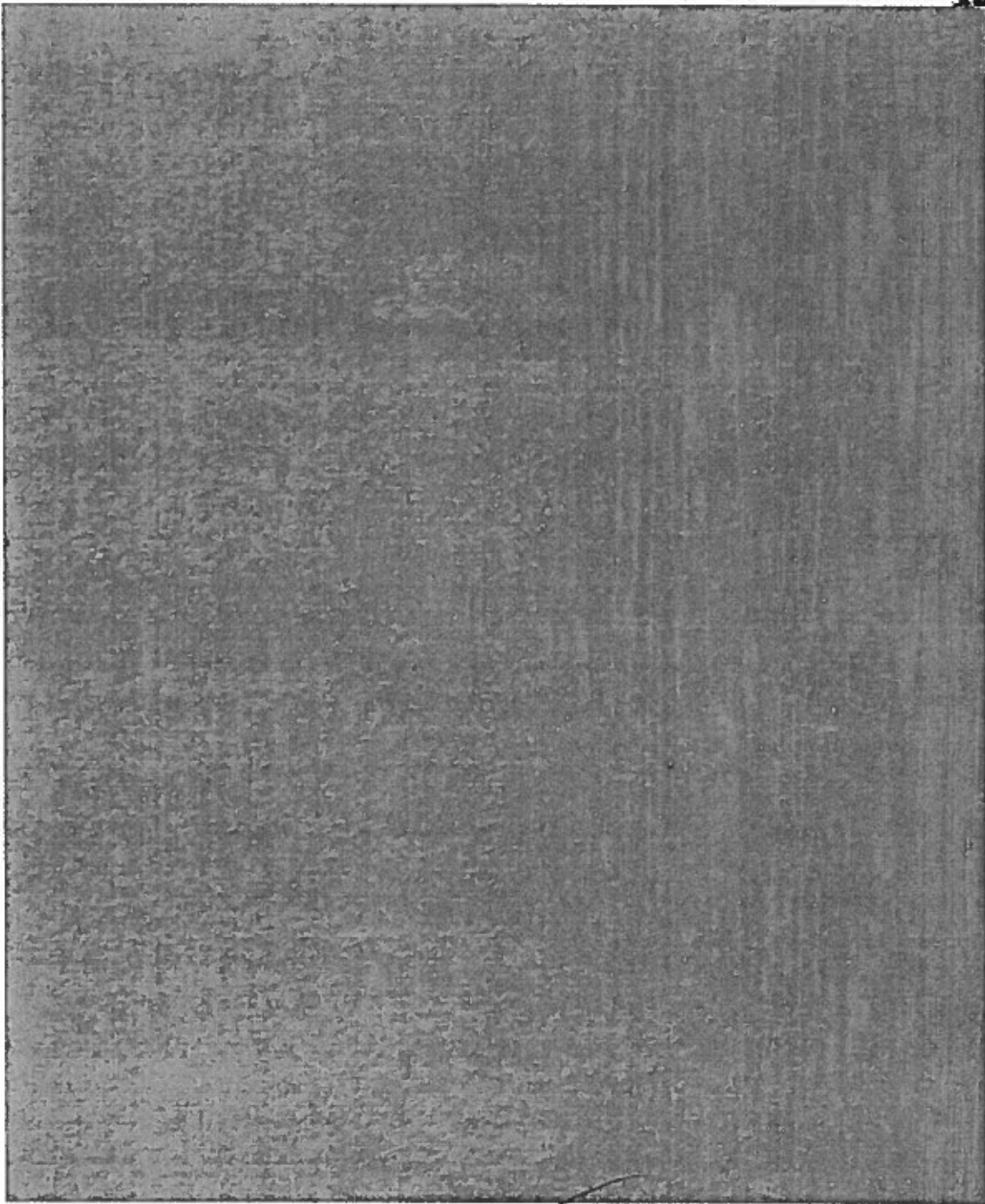
~~SECRET~~  
RESTRICTED DATA

~~SECRET  
RESTRICTED DATA~~



~~SECRET  
RESTRICTED DATA~~

~~SECRET~~  
~~RESTRICTED DATA~~

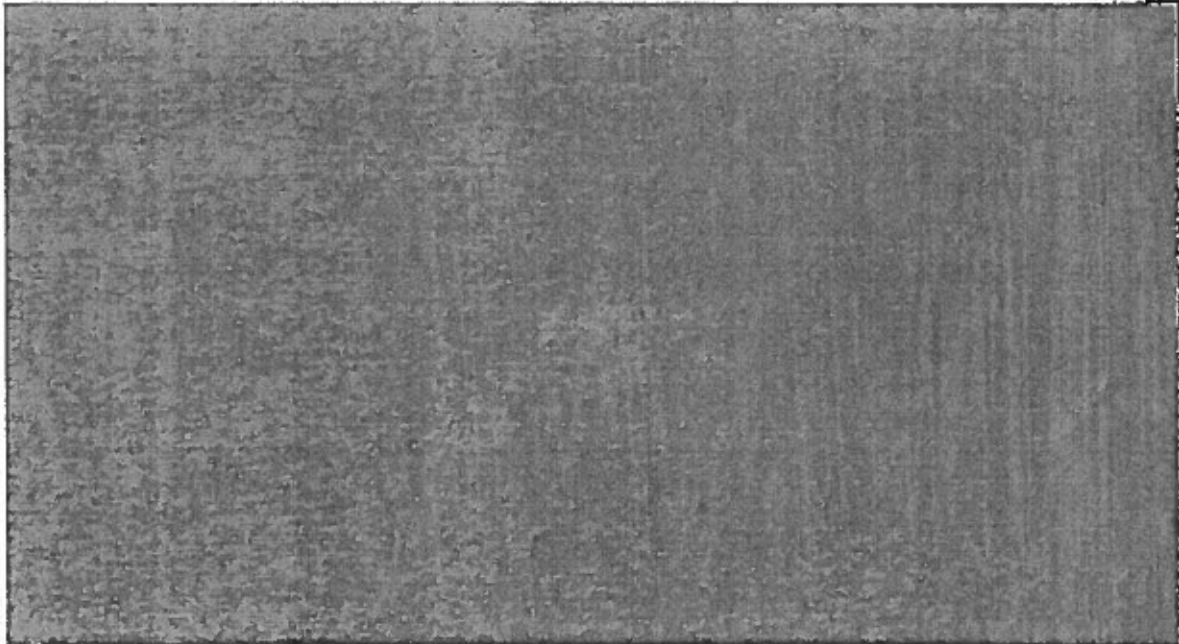


<sup>90</sup>  
~~SECRET~~  
~~RESTRICTED DATA~~

SECRET

SECRET

~~SECRET~~  
~~RESTRICTED DATA~~



US intercontinental cruise missiles include the Snark, which weighs 45- to 60-thousand lbs. at launch, and also, although never made operational, a smaller, simple, decoy missile known as Goose. Snark is sophisticated and expensive--mainly because high accuracy and performance were required. Goose would cost less than \$100,000 a unit, being made entirely of fiber-glass and other cheap materials. A relatively small solid-propellant booster would be required. The pay load over a range of 5,000 NM, however, would be only 1,000 lbs. for Goose, instead of Snark's more than 6,000 lbs. For China this would be discouragingly small.<sup>1</sup>

1. At one time the manufacturer did propose to convert Goose into a highly mobile purely deterrent system, relying on fallout for its effect, with probable circular errors [CEPs] on the order of 100 nautical miles.

~~SECRET~~  
~~RESTRICTED DATA~~

~~SECRET~~  
~~RESTRICTED DATA~~

It appears that little advantage in time would accrue to China from a decision to build cruise-type missiles instead of ICBMs, and there would be severe penalties in loss of capability and in requirements for scarce fissionable material. It must therefore be assumed that the Chinese will not follow this road unless they encounter severe and unpredicted obstacles in the development of ICBMs.

SUMMARY

Nuclear delivery systems are particularly expensive for Communist China; its resources are not equal to simultaneous development of more than a handful of different systems at most.

From now until 1966 or 1967, the only nuclear delivery threat is likely to be the presently obsolescent Beagle light bomber force, plus (for possible clandestine delivery) the submarines and ships already in existence—unless the Soviets provide Badgers or other sophisticated vehicles.

Starting some time between 1966 and 1968 the Chinese will probably have the capability to deploy at least a few nuclear-tipped medium-range (700 to 1,100 NM) ballistic missiles of their own, copied from Soviet missiles. Given a strong economic recovery, independent production of medium jet Badgers would probably be feasible in roughly the same time period, but missile and bomber efforts together might be beyond Chinese capacity.

~~SECRET~~  
~~RESTRICTED DATA~~

~~SECRET  
RESTRICTED DATA~~

The regional threat could reach the vicinity of 100 fairly accurate thermonuclear MRBMs, supplemented by bombers, by 1970 at the earliest.

ICBMs cannot be deployed by China until the early 1970s, and quite possibly not until the mid-70s or later.

~~SECRET  
RESTRICTED DATA~~

~~SECRET  
RESTRICTED DATA~~

~~RESTRICTED DATA  
SECRET~~

~~SECRET~~ ~~SECRET~~  
Restricted Data

DEFENSE TECHNICAL INFORMATION CENTER  
8725 Kingman Rd Ste 0944  
 Ft Belvoir, VA 22060-6218

OFFICIAL BUSINESS - PENALTY FOR PRIVATE USE \$300  
POSTMASTER: DO NOT FORWARD

AD Number	Class	Pages	Type Copy	Source	Priority
338867	S RD	0	H	U	

Received Date: 08-FEB-87

To : 7588  
Req By : TERRY NOLAN/  
ATTENTION: D AHICK TECH LIB

DEF ADVANCED RSCH PROJ AGCY

3701 N FAIRFAX DR  
ARLINGTON, VA 22203-1714



(This cover sheet is unclassified when separated from classified documents)

~~SECRET~~ ~~SECRET~~  
Restricted Data



**NATIONAL  
SECURITY  
ARCHIVE**

This document is from the holdings of:

The National Security Archive

Suite 701, Gelman Library, The George Washington University

2130 H Street, NW, Washington, D.C., 20037

Phone: 202/994-7000, Fax: 202/994-7005, [nsarchiv@gwu.edu](mailto:nsarchiv@gwu.edu)